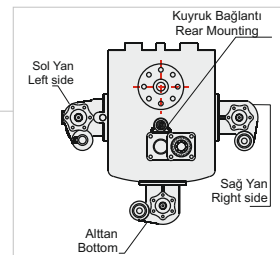
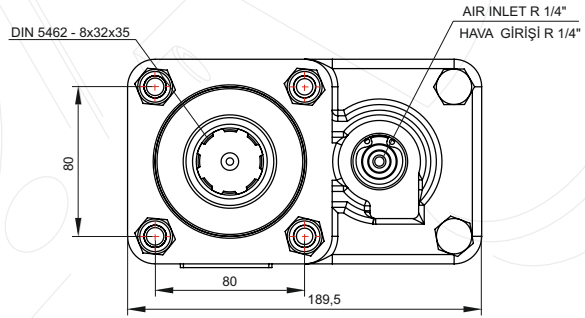
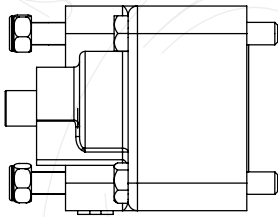
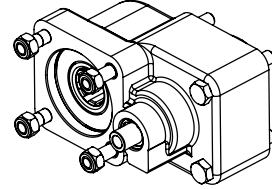
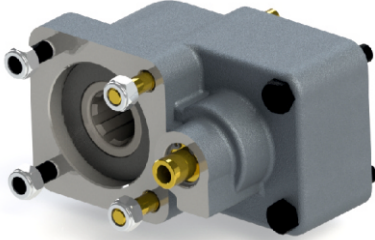




ZF REAR DOUBLE GEAR

50232321P0



**GENEL BİLGİLER/GENERAL DATA**

P.T.O. KODU / P.T.O. CODE	50232321P0	
Tork / Torque	26,5 Kgm	260 Nm
Güç(1000 rpm) / Power	24,5 Hp	18,3 Kw
Devir / Speed	675 rpm	675 rpm
Oran / Ratio	1/1,2	1/1,2
Ağırlık / Weight		
Bağlantı / Mounting	Kuyruk	Rear
Kumanda / Control	Havali	Pneumatic
Dönüş / P.T.O. Rotation	Sol - ISO	Left - ISO

Ana Şanzıman / Gearbox	Kullanılan Bazı Araçlar / Used Vehicles
ZF16S251-221-151-150-130- ZF S5/AK/65-120-111-110-92- GP ZF S5/AK/6S-90-80-70-66- 65-55-50-42-36-35-ZF-ECOMIT 9S75-9S109-16S109 ZF NEW ECOSPLIT 16S1620TD- 16S1820TO-18S1820TO- 16S2220TD-16S2220TO- 16S2520TO- 16S2023TDL	MAN / MERCEDES / BMC PROFESYONEL / FORD CARGO / CHRYSLER HINO / DODGE / FARGO / IVECO /DAF/ DAEWOO / RENAULT

Seçeceğiniz pompanın dönüş yönü, P.T.O. dönüş yönü ile ters olmalıdır.  
The rotation of the choosen pump has to be opposite with the rotation of P.T.O.

P.T.O. montaj edildikten sonra ana şanzıman yağını tamamlayın.  
Fill the oil of the gear box after mounting the P.T.O.

POWER TAKE OFF

P.T.O.