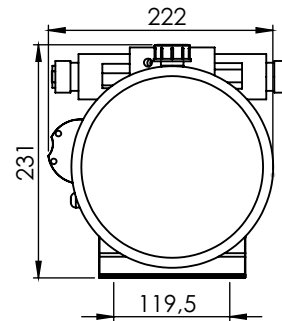
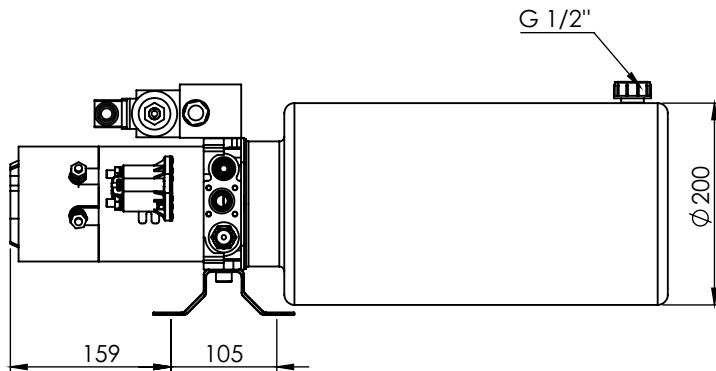
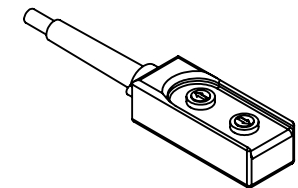
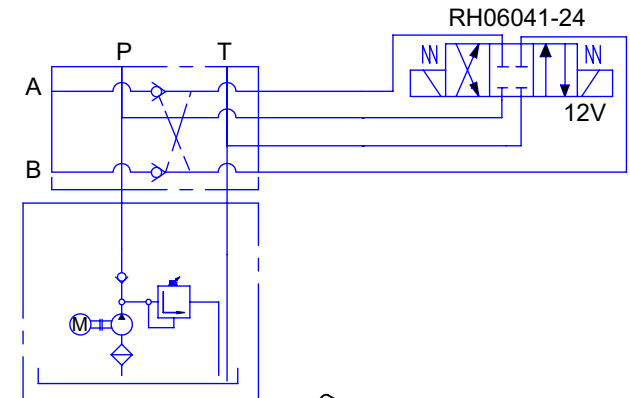


PART NO	PART NAME	QTY.
1	MBWOP-10	1
2	DC coupling	1
3	Return plastic	1
5	Connection plate	1
7	TV12Y	1
8	A-B 1/2"	1
9	STT12V200	1
10	10C2.1X302	1
11	SP-90-L	1
12	Filter	1
13	DC12V-2.2-F	1
14	F A05	1
15	ARON ADB3E01CL-12V	1



Hydraulic Circuit

A, B = G 3/8"
P, T = G 1/4"



2 button control and 3 meter cable added.

ELECTRIC MOTOR POWER

1.5 kW

VOLTAGE

12 V DC

PUMP DISPLACEMENT

2.1 cc/rev

OIL TANK CAPACITY

12 liter

MAX PRESSURE

200 bar

WORKING PRESSURE

150 bar

	NAME	DATE	SIGN.	Designation	DRAWING No			
DRAWN	G.BIÇER	02.01.2020		POWERPACK WITH SELENOID 1.5kW 12V 12 LT				
CHECKED	F.ATÇEKEN							
QUALITY C.								
				Do not tolerance	Format	Scale	WEIGHT	Kg
				Distance	Angle	A 4	MATERIAL	
				±2	±0,5	Protection Surface :		