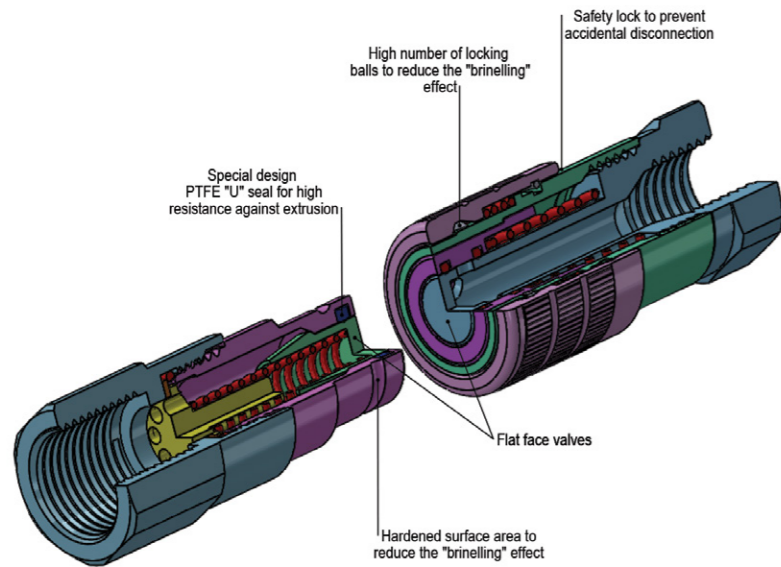


TECHNICAL FEATURES AND OPTIONS



- Working Temperature**
-20 °C / +100 °C
- Interchange**
ISO 16028
- Operating Pressure**
Up to 380 Bar
- Available Threads**
BSP - NPT
- Available Sizes**
From 3/8" to 1" 1/4
- Sealing Description**
Nitrile NBR
- Locking Mechanism**
Locking Ball System + Safety Lock
- Flow Rate**
Up to 308 l / min
- Material**
High Strength Carbon Steel

BENEFITS

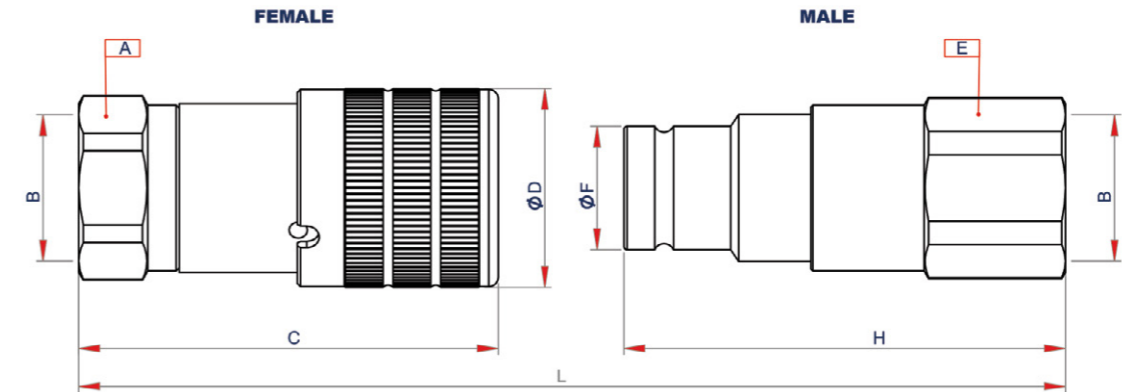


- Flat face is easy to clean, reducing the inclusion of contamination inside the hydraulic circuit.
- Minimal fluid spillage during disconnection, reducing fluid spillage to the environment.
- Minimal air inclusion during connection, enhancing correct function of the circuit.
- Linear flow reduces internal turbulence and pressure drop maintaining circuit efficiently.
- Good resistance to pressure impulses when the couplings are connected.
- Compact slim design.
- Safe and simple to use.

HOW TO USE

- Before to connect, clean the mating surface of the couplings to avoid dirt inclusion in the circuit.
- To connect push the male half towards the female half or vice versa.
- After connection turn the external sleeve to engage safety lock function, to prevent accidental disconnection.
- To disconnect turn the external sleeve until the sleeve lock notch match the safety lock ball and push back the sleeve.

MAIN APPLICATIONS



SIZE	Product Code	Product Name	ISO DN	Hex			Port B	Diameter		Length			Weight		
				mm	inch	mm		inch	mm	inch	kg	lbs			
3/8"	QCF-102	Caupled	12.5				3/8"			L	121	4.76	0.39	0.86	
	QCF-102-A	Female		A	27	1.06		D	32	1.26	C	67	2.64	0.23	0.51
	QCF-102-B	Male		E	27	1.06		F	19.70	0.78	H	69	2.71	0.16	0.35
1/2"	QCF-103	Caupled	12.5				1/2"			L	121	4.76	0.39	0.86	
	QCF-103-A	Female		A	27	1.06		D	32	1.26	C	67	2.64	0.23	0.51
	QCF-103-B	Male		E	27	1.06		F	19.70	0.78	H	69	2.71	0.16	0.35
3/4"	QCF-104	Caupled	19				3/4"			L	140	5.51	0.82	1.81	
	QCF-104-A	Female		A	36	1.42		D	40	1.57	C	84	3.31	0.52	1.15
	QCF-104-B	Male		E	36	1.42		F	24.5	0.96	H	74	2.91	0.30	0.66
1" 1/16	QCF-U-104	Caupled	19				1" 1/16			L	140	5.51	0.82	1.81	
	QCF-U-104-A	Female		A	36	1.42		D	40	1.57	C	84	3.31	0.52	1.15
	QCF-U-104-B	Male		E	36	1.42		F	24.5	1.0	H	74	2.91	0.30	0.66
1"	QCF-105	Caupled	25				1"			L	162	6.38	1.20	2.64	
	QCF-105-A	Female		A	41	1.61		D	48	1.89	C	98	3.86	0.78	1.72
	QCF-105-B	Male		E	41	1.61		F	29.9	1.18	H	85	3.35	0.42	0.92
1" 1/4	QCF-106	Caupled	25				1" 1/4			L	176	6.93	1.78	3.92	
	QCF-106-A	Female		A	50	1.97		D	55	2.17	C	110	4.33	1.14	2.51
	QCF-106-B	Male		E	50	1.97		F	36.0	1.42	H	90	3.54	0.64	1.41

SIZE	Max.Fullow Suggested		Connect Force		Disconnect Force		Spillage
	l / min	GPM	N	lbf	N	lbf	
3/8"	34	8.98	190	42.75	50	11.25	0.02
1/2"	34	8.98	190	42.75	50	11.25	0.02
3/4"	110	29.06	220	49.50	70	15.75	0.03
1" 1/16	110	29.06	220	49.50	70	15.75	0.03
1"	181	47.82	250	56.25	75	16.88	0.03
1" 1/4	308	116.57	350	78.75	90	20.25	0.17

Fluid:OIL ISO VG46
 Temperature:40 C
 Viscosity:41.4-50.6 mm2/s
 • Spillage is an indicative value of the fluid loss during disconnection
 Test Pressure:5.0 Bar
 Temperature Range:
 • Standart seals NBR (Nitrile):From -20 C to +100 C (-4 F to +212 F)
 VITONR • seals:From -15 C to +180 C (+5 F to +356 F)
 Tests:
 The couplings have been tested at max. operating pressure for 100.000 impulses according to ISO 18869:2017

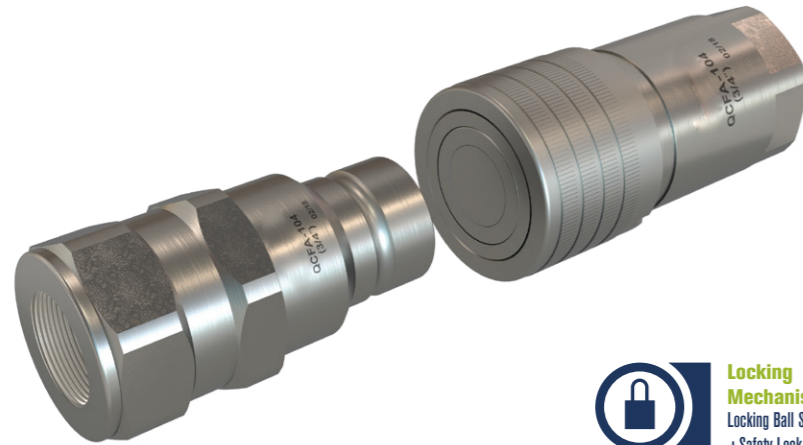
SIZE	Max.Operating Pressure						Burst Pressure					
	Caupled		Female		Male		Caupled		Female		Male	
	MPa	psi	MPa	psi	MPa	psi	MPa	psi	MPa	psi	MPa	psi
3/8"	37	5366	37	5366	37	5366	100	14500	100	14500	100	14500
1/2"	37	5366	37	5366	37	5366	100	14500	100	14500	100	14500
3/4"	35	5076	35	5076	35	5076	100	14500	100	14500	100	14500
1" 1/16	35	5076	35	5076	35	5076	100	14500	100	14500	100	14500
1"	33	4786	33	4786	33	4786	80	11600	80	11600	80	11600
1" 1/4	38	5511	38	5511	38	5511	80	11600	80	11600	80	11600



- Never connect or disconnect with dynamic pressure (e.g. pump on).
- Do not use the female coupling disconnected with high impulse pressure.
- Do not couple - uncouple with flow and/or pressure in the circuit.
- Do not couple - uncouple when the temperature inside of the circuit is higher than 80 °C / 176 °F
- Check the maximum allowable working pressure of the port in use.
- Make sure that the medium used is compatible with seal and material as indicated for each series.

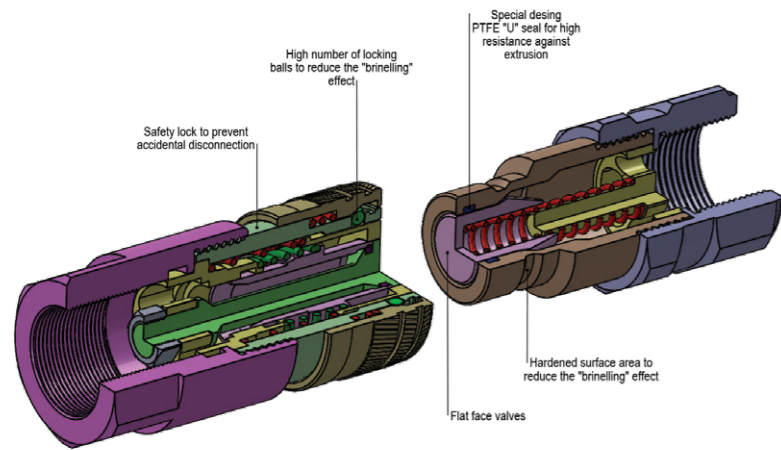
INDEX

TECHNICAL FEATURES AND OPTIONS



- Working Temperature**
-20 °C / +100 °C
- Interchange**
ISO 16028
- Operating Pressure**
Up to 450 Bar
- Available Threads**
BSP - NPT
- Available Sizes**
From 3/8" to 1"
- Sealing Description**
Nitrile NBR
- Locking Mechanism**
Locking Ball System + Safety Lock
- Flow Rate**
Up to 205 l / min
- Material**
High Strength Carbon Steel

BENEFITS

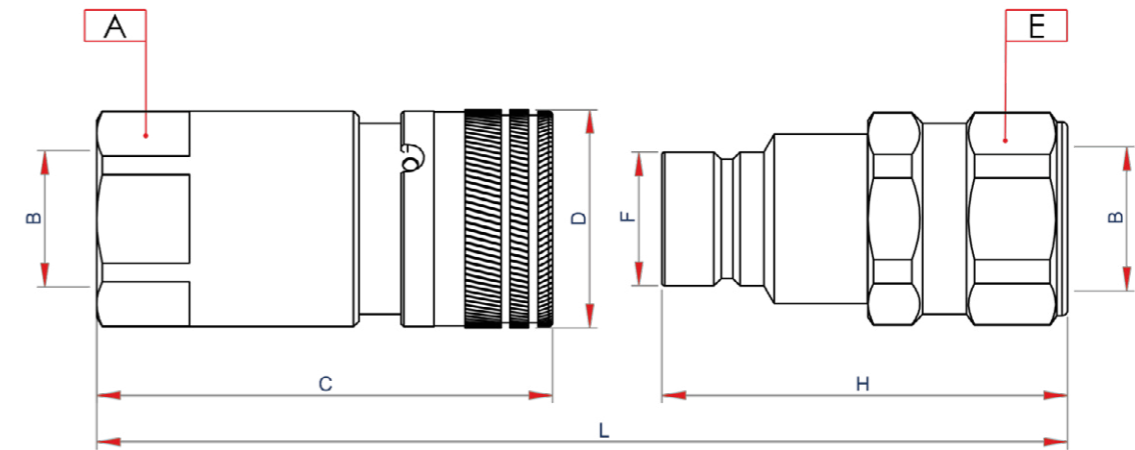


- Flat face is easy to clean, reducing the inclusion of contamination inside the hydraulic circuit.
- Minimal fluid spillage during disconnection, reducing fluid spillage to the environment.
- Minimal air inclusion during connection, enhancing correct function of the circuit.
- Linear flow reduces internal turbulence and pressure drop maintaining circuit efficiently.
- Good resistance to pressure impulses when the couplings are connected.
- Compact slim design.
- Safe and simple to use.

HOW TO USE

- Before to connect, clean the mating surface of the couplings to avoid dirt inclusion in the circuit.
- To connect push the male half towards the female half or vice versa.
- After connection turn the external sleeve to engage safety lock function, to prevent accidental disconnection.
- To disconnect turn the external sleeve until the sleeve lock notch match the safety lock ball and push back the sleeve.

MAIN APPLICATIONS



SIZE	Product Code	Product Name	ISO DN	Hex			Port B	Diameter		Lenght		Weight			
				mm	inch	mm		inch	mm	inch	kg	lbs			
3/8"	QCFA-102	Caupled	10				3/8"			L	121	4.76	0.43	0.95	
	QCFA-102-A	Female		A	27	1.06		D	32	1.26	C	67	2.64	0.25	0.55
	QCFA-102-B	Male		E	27	1.06		F	19.70	0.78	H	69	2.71	0.18	0.40
1/2"	QCFA-103	Caupled	12.5				1/2"			L	140	5.51	0.87	1.92	
	QCFA-103-A	Female		A	36	1.42		D	40	1.57	C	84	3.31	0.55	1.21
	QCFA-103-B	Male		E	36	1.42		F	24.50	0.96	H	74	2.91	0.32	0.71
3/4"	QCFA-104	Caupled	19				3/4"			L	162	6.38	1.31	2.89	
	QCFA-104-A	Female		A	41	1.61		D	48	1.89	C	98	3.86	0.83	1.83
	QCFA-104-B	Male		E	41	1.61		F	29.90	1.18	H	85	3.35	0.48	1.06
1" 1/16	QCFA-U-204	Caupled	19				1" 1/16			L	162	6.38	1.31	2.89	
	QCFA-U-204-A	Female		A	41	1.61		D	48	1.89	C	98	3.86	0.83	1.83
	QCFA-U-204-B	Male		E	41	1.61		F	29.90	1.18	H	85	3.35	0.48	1.06
1"	QCFA-105	Caupled	25				1"			L	176	6.93	2.11	4.66	
	QCFA-105-A	Female		A	50	1.97		D	55	2.17	C	110	4.33	1.26	2.78
	QCFA-105-B	Male		E	50	1.97		F	36.0	1.42	H	90	3.54	0.85	1.88

SIZE	Max.Fulow Suggested		Connect Force		Disconnect Force		Spillage
	l/min	GPM	N	lbf	N	lbf	
3/8"	32	8.45	170	38.21	40	9.00	0.01
1/2"	102	26.95	190	42.75	50	11.25	0.02
3/4"	147	38.84	220	49.50	70	15.75	0.03
1" 1/16	147	38.84	220	49.50	70	15.75	0.03
1"	205	54.16	250	56.25	75	16.88	0.03

Fluid:OIL ISO VG46
 Temperature:40 C
 Viscosity:41.4-50.6 mm2/s
 • Spillage is an indicative value of the fluid loss during disconnection
 Test Pressure:5.0 Bar
 Temperature Range:
 • Standart seals NBR (Nitrile):From -20 C to +100 C (-4 F to +212 F)
 VITONR • seals:From -15 C to +180 C (+5 F to +356 F)
 Tests:
 The couplings have been tested at max. operating pressure for 100.000 impulses according to ISO 18869:2017

SIZE	Max.Operating Pressure						Burst Pressure					
	Caupled		Female		Male		Caupled		Female		Male	
	MPa	psi	MPa	psi	MPa	psi	MPa	psi	MPa	psi	MPa	psi
3/8"	45	6527	45	6527	45	6527	100	14500	100	14500	100	14500
1/2"	45	6527	45	6527	45	6527	100	14500	100	14500	100	14500
3/4"	40	5802	40	5802	40	5802	100	14500	100	14500	100	14500
1" 1/16	40	5802	40	5802	40	5802	100	14500	100	14500	100	14500
1"	38	5512	38	5512	38	5512	80	11600	80	11600	80	11600

• Never connect or disconnect with dynamic pressure (e.g. pump on).
 • Do not use the female coupling disconnected with high impulse pressure.
 • Do not couple - uncouple with flow and/or pressure in the circuit.
 • Do not couple - uncouple when the temperature inside of the circuit is higher than 80 °C / 176 °F
 • Check the maximum allowable working pressure of the port in use.
 • Make sure that the medium used is compatible with seal and material as indicated for each series.

INDEX