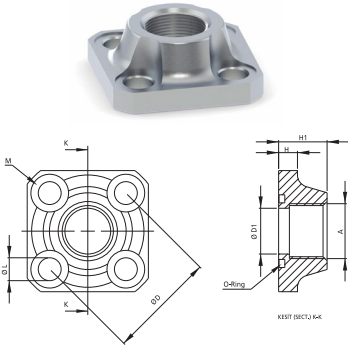
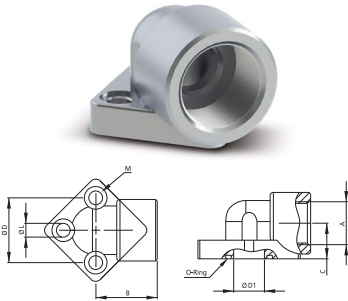


EDZA PUMP ADAPTORS



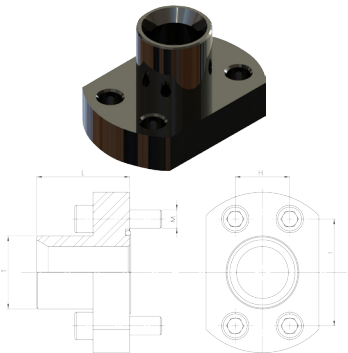
CODE	A	D	D1	H1	L	M	O-Ring
EDZA-426	R 1/4"	26	10	18	6.5	M6x16	13.1x2.62
EDZA-428	R 1/4"	28	10	18	6.5	M6x16	13.1x2.62
EDZA-430	R 3/8"	30	12	18	6.5	M6x16	15.88x2.62
EDZA-435	R 3/8"	35	13	18	6.5	M6x16	18.72x2.62
EDZA-440M6	R 1/2"	40	17	18	6.5	M6x20	22x3
EDZA-440	R 1/2"	40	17	18	8.5	M8x20	22x3
EDZA-448	R 3/4"	48	22	22	8.5	M8x20	29x3
EDZA-451	R 3/4"	51	22	22	10.5	M10x25	29x3
EDZA-456	R 1"	56	28	22	10.5	M10x25	34x3
EDZA-462	R 1"	62.5	28	28	13	M12x25	38x3
EDZA-472	R 1"	72.5	28	28	13	M12x25	38x3

DRA 3 HOLED PUMP ADAPTORS



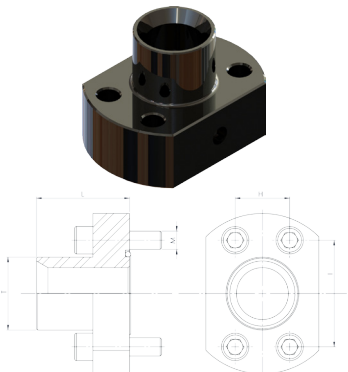
CODE	A	B	C	D	D1	L	M	O-Ring
DRA-330-38	R 3/8"	27	18	30	12	6.5	M6x20	15.88x2.62
DRA-330-12	R 1/2"	27	18	30	12	6.5	M6x20	15.88x2.62
DRA-335-38	R 3/8"	30	19	35	14	6.5	M6x20	18.72x2.62
DRA-335-12	R 1/2"	30	19	35	14	6.5	M6x20	18.72x2.62
DRA-335-34	R 3/4"	30	19	35	14	6.5	M6x20	18.72x2.62
DRA-340-12	R 1/2"	38	22	40	19	8.5	M8x25	22x3
DRA-340-34	R 3/4"	38	22	40	19	8.5	M8x25	22x3
DRA-348-34	R 3/4"	44	27	48	19	8.5	M8x25	29x4
DRA-348-1	R 1"	44	27	48	19	8.5	M8x25	29x4
DRA-351-34	R 3/4"	45	27	51	24.5	10.5	M10x25	29x4
DRA-351-1	R 1"	45	27	51	24.5	10.5	M10x25	29x4
DRA-356-34	R 3/4"	45	27	56	24.5	10.5	M10x25	29x4
DRA-356-1	R 1"	45	27	56	24.5	10.5	M10x25	29x4

SAE 3000 PSI 60° ADAPTORS

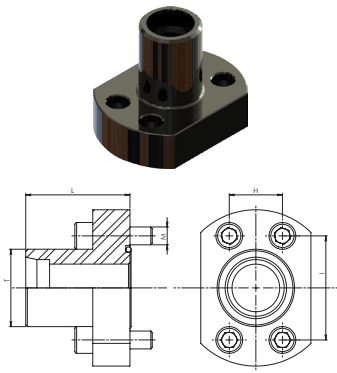


CODE	DIM.	H	I	L	T (BSPP)	BOLT M	MAX. PRESSURE (Bar)
SAE-301-G012	1/2"	17,5	38,0	39	1/2"	M8X30	210
SAE-302-G034	3/4"	22,3	47,6	45	3/4"	M10X35	210
SAE-303-G100	1"	26,2	52,4	49	1"	M10X35	210
SAE-304-G114	1 1/4"	30,2	58,7	55	1-1/4"	M10X40(M12X40)	210
SAE-305-G112	1 1/2"	35,7	69,9	61	1-1/2"	M12X45(M14X45)	210
SAE-306-G200	2"	42,9	77,8	69	2"	M12X45(M14X45)	210

SAE 6000 PSI 60° ADAPTORS

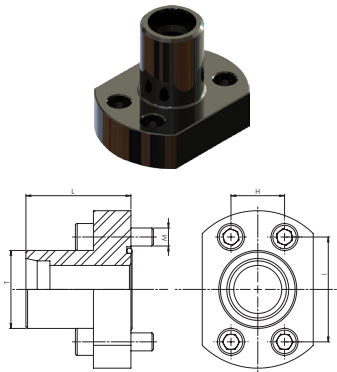


CODE	DIM	H	I	L	T (BSPP)	BOLT M	MAX. PRESSURE (Bar)
SAE-601-G012	1/2"	18,2	40,5	40	1/2"	M8X30	420
SAE-602-G034	3/4"	23,8	50,8	47	3/4"	M10X35	420
SAE-603-G100	1"	27,8	57,2	56	1"	M12X40	420
SAE-604-G114	1 1/4"	31,8	66,6	61	1-1/4"	M12X45	420



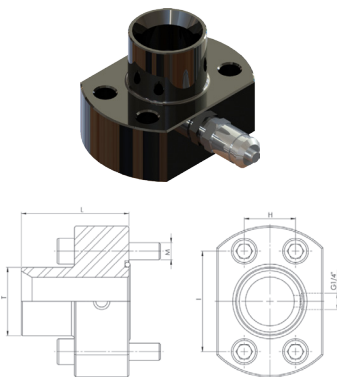
SAE 3000 PSI 24° ADAPTORS

CODE	DIM	H	I	L	T (Metric)	BOLT M	MAX. PRESSURE (Bar)
SAE-301-S16	1/2"	17,5	38,1	47	24x1,5	M8x30	210
SAE-302-S20	3/4"	22,3	47,6	52	30x2,0	M10x35	210
SAE-303-S20	1"	26,2	52,4	55	30x2,0	M10x35	210
SAE-303-S25	1"	26,2	52,4	55	36x2,0	M10x35	210
SAE-304-S25	1 1/4"	30,2	58,7	60	36x2,0	M10x40(M12x40)	210
SAE-304-S30	1 1/4"	30,2	58,7	60	42x2,0	M10x40(M12x40)	210
SAE-305-S38	1 1/2"	35,7	69,9	70	52x2,0	M12x45(M14x45)	210



SAE 6000 PSI 24° ADAPTORS

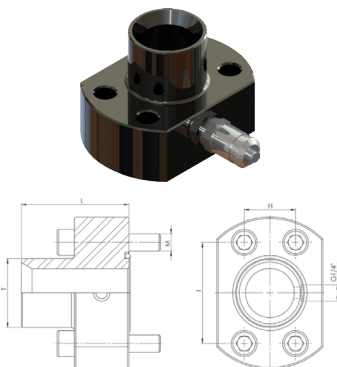
CODE	DIM	H	I	L	T (Metric)	BOLT M	MAX. PRESSURE (Bar)
SAE-601-S16	1/2"	18,2	40,5	47	24X1,5	M8X30	210
SAE-602-S16	3/4"	23,8	50,8	54	24X1,5	M10X35	210
SAE-602-S20	3/4"	23,8	50,8	54	30X2,0	M10X35	210
SAE-603-S20	1"	27,8	57,2	60	30X2,0	M12X40	210
SAE-604-S30	1-1/4"	31,8	66,6	68	42X2,0	M12X45	210



SAE 3000 PSI 60° ADAPTORS WITH MANOMETER OUTPUT

CODE	DIM	H	I	L	T (Metric)	BOLT M	MAX. PRESSURE (Bar)
SAEM-301-G012	1/2"	17,5	38	53	1/2"	M8X45	210
SAEM-302-G034	3/4"	22,3	47,6	59	3/4"	M10X50	210
SAEM-303-G100	1"	26,2	52,4	63	1"	M10X50	210
SAEM-304-G114	1 1/4"	30,2	58,7	69	1-1/4"	M10X55(M12X55)	210
SAEM-305-G112	1 1/2"	35,7	69,9	72	1-1/2"	M12X55(M14X55)	210
SAEM-306-G200	2"	42,9	77,8	79	2"	M12X55(M14X55)	210

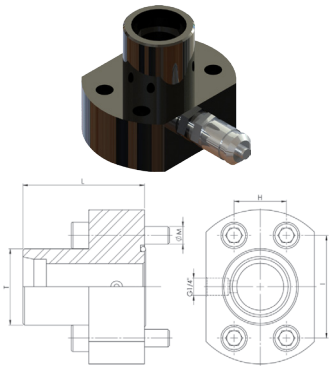
► PRESSURE MEASURING FITTING IS SOLD SEPARATELY.



SAE 6000 PSI 60° ADAPTORS WITH MANOMETER OUTPUT

CODE	DIM	H	I	L	T (Metric)	BOLT M	MAX. PRESSURE (Bar)
SAEM-601-G012	1/2"	18,2	40,5	54	1/2"	M8X45	420
SAEM-602-G034	3/4"	23,8	50,8	61	3/4"	M10X50	420
SAEM-603-G100	1"	27,8	57,2	67	1"	M12X50	420
SAEM-604-G114	1 1/4"	31,8	66,6	72	1-1/4"	M12X55	420

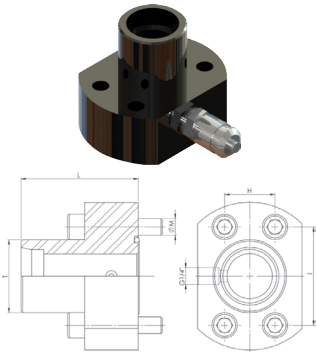
► PRESSURE MEASURING FITTING IS SOLD SEPARATELY.



SAE 3000 PSI 24° ADAPTORS WITH MANOMETER OUTPUT

CODE	DIM	H	I	L	T (Metric)	BOLT M	MAX. PRESSURE (Bar)
SAEM-301-S16	1/2"	17,5	38,1	61	22x1,5	M8x45	210
SAEM-302-S20	3/4"	22,3	47,6	66	30x2,0	M10x50	210
SAEM-303-S20	1"	26,2	52,4	69	30x2,0	M10x50	210
SAEM-303-S25	1"	26,2	52,4	69	36x2,0	M10x50	210
SAEM-304-S25	1 1/4"	30,2	58,7	74	36x2,0	M10x55(M12x55)	210
SAEM-304-S30	1 1/4"	30,2	58,7	74	42x2,0	M10x55(M12x55)	210
SAEM-305-S38	1 1/2"	35,7	69,9	80	52x2,0	M12x55(M14x55)	210

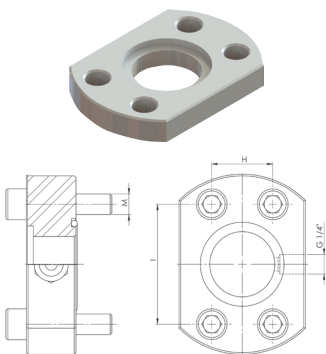
► PRESSURE MEASURING FITTING IS SOLD SEPARATELY.



SAE 6000 PSI 24° ADAPTORS WITH MANOMETER OUTPUT

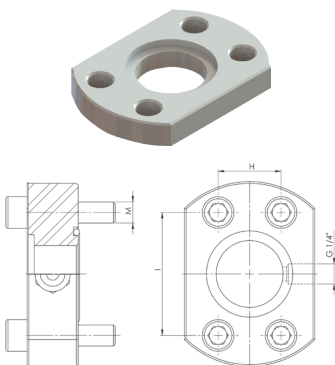
CODE	DIM	H	I	L	T (Metric)	BOLT M	MAX. PRESSURE (Bar)
SAEM-601-S16	1/2"	18,2	40,5	61	24x1,5	M8x45	420
SAEM-602-S16	3/4"	23,8	50,8	68	24x1,5	M10x50	420
SAEM-602-S20	3/4"	23,8	50,8	68	30x2,0	M10x50	420
SAEM-603-S20	1"	27,8	57,2	71	30x2,0	M12x50	420
SAEM-604-S30	1 1/4"	31,8	66,6	79	42x2,0	M12x55	420

► PRESSURE MEASURING FITTING IS SOLD SEPARATELY.



SAE 3000 PSI WELDING ADAPTORS

CODE	DIM	H	I	BOLT M	MAX. PRESSURE (Bar)
SAE-301-OW	1/2"	17,5	38,1	M8x25	210
SAE-302-OW	3/4"	22,3	47,6	M10x30	210
SAE-303-OW	1"	26,2	52,4	M10x30	210
SAE-304-OW	1 1/4"	30,2	58,7	M10x30	210
SAE-305-OW	1 1/2"	35,7	69,9	M12x35	210
SAE-306-OW	2"	42,9	77,8	M12x35	210
SAE-307-OW	2 1/2"	50,8	88,9	M12x35	210
SAE-308-OW	3"	61,9	106,4	M16x40	210



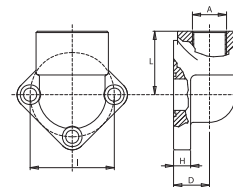
SAE 3000 PSI WELDING ADAPTORS WITH MANOMETER OUTPUT

CODE	DIM	H	I	BOLT M	MAX. PRESSURE (Bar)
SAEM-301-OW	1/2"	17,5	38,1	M8x40	210
SAEM-302-OW	3/4"	22,3	47,6	M10x45	210
SAEM-303-OW	1"	26,2	52,4	M10x45	210
SAEM-304-OW	1 1/4"	30,2	58,7	M10x45	210
SAEM-305-OW	1 1/2"	35,7	69,9	M12x50	210
SAEM-306-OW	2"	42,9	77,8	M12x50	210
SAEM-307-OW	2 1/2"	50,8	88,9	M12x50	210
SAEM-308-OW	3"	61,9	106,4	M16x55	210

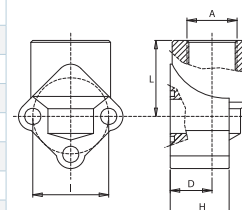
► PRESSURE MEASURING FITTING IS SOLD SEPARATELY.



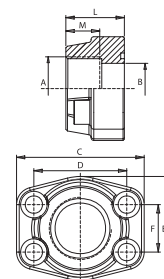
RPA SERIES FEMALE ELBOW ADAPTORS						
CODE	A BSP	I	D	H	L	MOUNTING DIMENSION
RPA05-038	3/8"	26	17	10	27	M5x20
RPA05-012	1/2"	26	17	10	27	M5x20
RPA1-038	3/8"	30	17	10	27	M6x20
RPA1-012	1/2"	30	17	10	27	M6x20
RPA2-012	1/2"	40	21	11	36	M8x25
RPA2-034	3/4"	40	21	11	36	M8x25
RPA3-034	3/4"	51	27	15	46	M10x30
RPA3-100	1"	51	27	15	46	M10x30
RPA35-114	1 1/4"	62	36	16	56	M10x30
RPA4-112	1 1/2"	72.5	37	17	56	M12x35



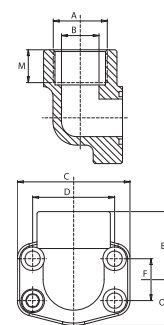
RP SERIES FEMALE ELBOW ALUMINUM ADAPTORS						
CODE	A BSP	I	D	H	L	MOUNTING DIMENSION
RP05-038	3/8"	26	18	24	30	M5x35
RP05-012	1/2"	26	18	24	30	M5x35
RP1-038	3/8"	30	18	26	30	M6x35
RP1-012	1/2"	30	18	26	30	M6x35
RP2-012	1/2"	40	20	31	40	M8x45
RP2-034	3/4"	40	20	31	40	M8x45
RP3-034	3/4"	51+56	26	43	46	M10x60
RP3-100	1"	51+56	26	43	46	M10x60
RP35-114	1 1/4"	62	33.5	17	57	M12x35
RP4-112	1 1/2"	72.5	38	17	64	M12x35



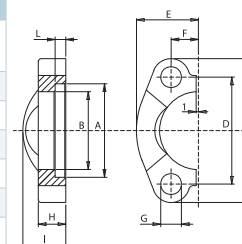
SAE 6000 BSP STRAIGHT THREADED PUMP ADAPTORS									
CODE	A SAE	B	L	M	C	D	E	F	MOUNTING DIMENSION
F401G038	3/8"	13	36	13	58	40,49	48	18,24	M8
F401G012	1/2"	13	36	15	58	40,49	48	18,24	M8
F402G034	3/4"	19	36	18	72	50,80	54	23,80	M10
F403G100	1"	25	44	20	81	57,15	70	27,76	M12
F404G114	1 1/4"	31	44	22	95	66,68	78	31,75	M14
F405G112	1 1/2"	38	51	24	107	79,38	90	36,50	M16
F406G200	2"	50	70	33	136	96,82	117	44,45	M20
F408G212	2 1/2"	63	75	35	167	123,80	151	58,70	M24
F410G300	3"	73	90	40	209	152,40	179	71,40	M30



SAE 6000 ELBOW PUMP ADAPTORS									
CODE	A SAE	B	M	C	D	E	O	F	MOUNTING DIMENSION
F90580G012	1/2"	13	20	58	40,49	37	23	18,24	M8
F90600G034	3/4"	19	23	73	50,80	42	28	23,80	M10
F90602G100	1"	25	25	83	57,15	50	34	27,76	M12
F90604G114	1 1/4"	31	27	96	66,68	59	40	31,75	M14
F90606G112	1 1/2"	38	29	110	79,38	66	45	36,50	M16
F90608G200	2"	50	35	135	96,82	76	59	44,45	M20

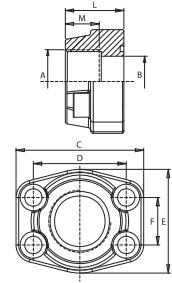


SAE 6000 FLANGE HALVES ADAPTORS									
CODE	S.A.E.	A	B	C	D	E	F	I	L
SFT6001012	1/2"	32,5	24,6	58	40,49	24	9,12	22	7,2
SFT6002034	3/4"	42	32,5	71	50,80	30	11,91	28	8,3
SFT6003100	1"	48,4	38,9	80	57,15	35	13,89	32	9
SFT6004114	1 1/4"	54,8	44,5	97	66,68	39	15,88	38	9,8
SFT6005112	1 1/2"	64,3	51,6	112	79,38	48	18,26	42	12,1
SFT6006200	2"	80,2	67,6	135	96,82	57	22,23	52	12,1
SFT6008212	2 1/2"	108,5	89,5	174	123,80	75	29,35	48	20
SFT6010300	3"	132,5	114,5	209	152,40	89	35,7	58	25



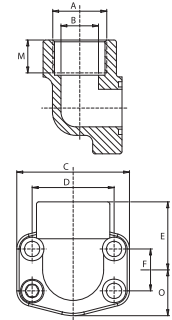
SAE 3000 SERIES BSP STRAIGHT THREADED ADAPTORS

CODE	A SAE	B	L	M	C	D	E	F	MOUNTING DIMENSION
F080G038	3/8"	13	36	13	58	38,10	48	17,48	M8
F080G012	1/2"	13	36	15	58	38,10	48	17,48	M8
F100G034	3/4"	19	36	18	67	47,63	50	22,23	M10
F102G100	1"	25	38	20	72	52,37	54	26,19	M10
F104G114	1 1/4"	31	41	22	81	58,72	70	30,18	M10
F106G112	1 1/2"	38	44	24	95	69,85	78	35,71	M12
F108G200	2"	50	45	26	104	77,77	90	42,88	M12
F110G212	2 1/2"	63	50	30	116	88,90	102	50,80	M12
F112G300	3"	73	50	30	136	106,38	125	61,93	M16
F114G312	3 1/2"	89	50	30	153	120,65	137	69,85	M16
F116G400	4"	99	50	30	163	130,18	147	77,77	M16
F118G500	5"	120	50	30	185	152,40	181	92,08	M16



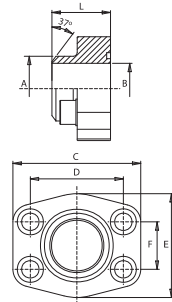
SAE 3000 ELBOW PUMP ADAPTORS

CODE	A SAE	B	M	C	D	E	O	F	MOUNTING DIMENSION
F90280G012	1/2"	13	20	58	38,10	37	23	17,48	M8
F90300G034	3/4"	19	20	69	47,63	39	25	22,23	M10
F90302G100	1"	25	20	75	52,37	42	27	26,19	M10
F90304G114	1 1/4"	31	23	82	58,72	50	34	30,18	M10
F90306G112	1 1/2"	38	25	96	69,85	59	39	35,71	M12
F90308G200	2"	50	27	106	77,77	66	44	42,88	M12
F90310G212	2 1/2"	60	31	116	88,90	78	50	50,80	M12



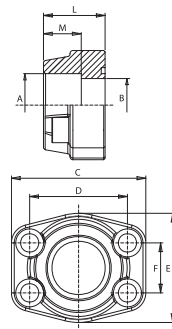
SAE 3000 FT SERIES WELDING PUMP ADAPTORS

CODE	S.A.E.	A	B	L	C	D	E	F	MOUNTING DIMENSION
FT080012	1/2"	21,6	13	36	58	38,10	48	17,48	M8
FT100034	3/4"	27,2	19	36	67	47,63	50	22,23	M10
FT102100	1"	34,5	25	38	71	52,37	54	26,19	M10
FT104114	1 1/4"	42,8	31	41	81	58,72	70	30,18	M10
FT106112	1 1/2"	48,6	38	44	95	69,85	78	35,71	M12
FT108200	2"	61	50	45	104	77,77	90	42,88	M12
FT110212	2 1/2"	76,6	63	50	116	88,90	102	50,80	M12
FT112300	3"	89	73	50	136	106,38	125	61,93	M16



SAE 3000 FS SERIES WELDING PUMP ADAPTORS

CODE	S.A.E.	A	B	L	C	D	E	F	MOUNTING DIMENSION
FS080038	3/8"	17,5	13	36	58	38,10	48	17,48	M8
FS080012	1/2"	21,6	13	36	58	38,10	48	17,48	M8
FS100034	3/4"	27,2	19	36	67	47,63	50	22,23	M10
FS102100	1"	34,1	25	38	71	52,37	54	26,19	M10
FS104114	1 1/4"	42,8	31	41	81	58,72	70	30,18	M10
FS106112	1 1/2"	48,6	38	44	95	69,85	78	35,71	M12
FS108200	2"	61	50	45	104	77,77	90	42,88	M12
FS110212	2 1/2"	76,6	63	50	116	88,90	102	50,80	M12
FS112300	3"	90,5	73	50	136	106,38	125	61,93	M16



SAE 3000 FLANGE HALVES ADAPTORS

KOD	S.A.E.	A	B	C	D	E	F	I	L
SFT3001012	1/2"	31	24,3	55	38,10	23	8,74	20	6,2
SFT3002034	3/4"	38,9	32,1	66	47,63	26	11,13	22	6,2
SFT3003100	1"	45,2	38,5	69	52,37	29,2	13,08	24	7,5
SFT3004114	1 1/4"	51,6	43,7	79	58,72	36,3	15,09	22	7,5
SFT3005112	1 1/2"	61,1	50,8	95	69,85	41,1	17,86	25	7,5
SFT3006200	2"	72,2	62,7	103	77,77	48,2	21,44	26	9
SFT3007212	2 1/2"	84,9	74,9	114	88,90	54	25,40	38	9
SFT3008300	3"	102,4	90,9	136	106,38	65,3	30,96	41	9

