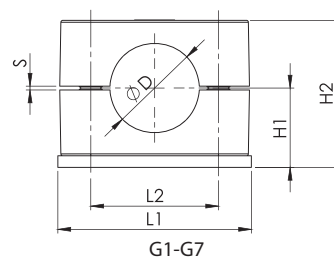
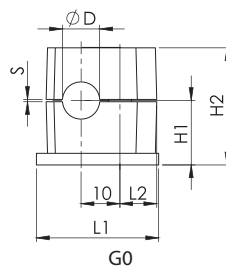


## SINGLE PLASTIC HOSE CLAMPS

Group	Product Code	Outer Dia. (mm)	Pipe Teeth (inch)	Dimensions				
				L1	L2	H1	H2	S min.
G0	HBKPPSTTL0006	6	1/8	31,5	9,5	16	29	0,4
	HBKPPSTTL0008	8						
	HBKPPSTTL0010	10						
	HBKPPSTTL0012	12						
G1	HBKPPSTTL0106	6	1/8	37,5	20	16,5	30	0,4
	HBKPPSTTL0108	8						
	HBKPPSTTL0110	10						
	HBKPPSTTL0112	12						
G2	HBKPPSTTL0212.7	12.7	1/4	42.2	26	19,5	36	0,6
	HBKPPSTTL0213,5	13.5						
	HBKPPSTTL0214	14						
	HBKPPSTTL0215	15						
	HBKPPSTTL0216	16						
	HBKPPSTTL0217.2	17.2						
G3	HBKPPSTTL0319	19	1/2	50,5	33	21	39	0,6
	HBKPPSTTL0320	20						
	HBKPPSTTL0321.3	21.3						
	HBKPPSTTL0322	22						
	HBKPPSTTL0325	25						
G4	HBKPPSTTL0426.9	26.9	3/4	59	40	24	45	0,6
	HBKPPSTTL0428	28						
	HBKPPSTTL0430	30						
G5	HBKPPSTTL0532	32	1	72,2	52	30	57	0,8
	HBKPPSTTL0533.7	33.7						
	HBKPPSTTL0535	35						
	HBKPPSTTL0538	38						
	HBKPPSTTL0540	40						
G6	HBKPPSTTL0644.5	44.5	1-1/4	88	66	36	69	0,8
	HBKPPSTTL0648.3	48,3						
	HBKPPSTTL0650.8	50,8						
	HBKPPSTTL0654	54						
G7	HBKPPSTTL0760.3	60.3	2	121	94	49,5	99	0,8
	HBKPPSTTL0763.5	63.5						
	HBKPPSTTL0776.1	76.1						



### DOUBLE PLASTIC HOSE CLAMPS

Group	Product Code	Outer Dia. (mm)	Pipe Teeth (inch)	Dimensions				
				L1	L2	H1	H2	S min.
i1	HBKIK0106	6	1/8	37,4	20	16	40	0,6
	HBKIK0108	8						
	HBKIK0110	10						
	HBKIK0112	12						
i2	HBKIK0212.7	12,7	1/4	55	29	17,5	42	0,7
	HBKIK0213.5	13.5						
	HBKIK0214	14						
	HBKIK0215	15	3/8					
	HBKIK0216	16						
	HBKIK0217.2	17.2						
i3	HBKIK0319	19	1/2	70	36	22	52	0,7
	HBKIK0320	20						
	HBKIK0321.3	21.3						
	HBKIK0322	22						
	HBKIK0325	25						
i4	HBKIK0426,9	26,9	3/4	85	45	24,5	58,5	0,7
	HBKIK0428	28						
	HBKIK0430	30						
i5	HBKIK0532	32	1	110	56	31	70	0,7
	HBKIK0533.7	33,7						
	HBKIK0535	35						
	HBKIK0538	38						
	HBKIK0540	40						
	HBKIK0542	42						

