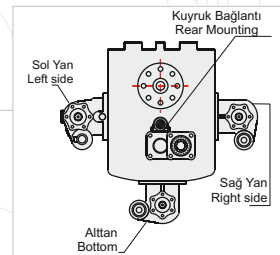
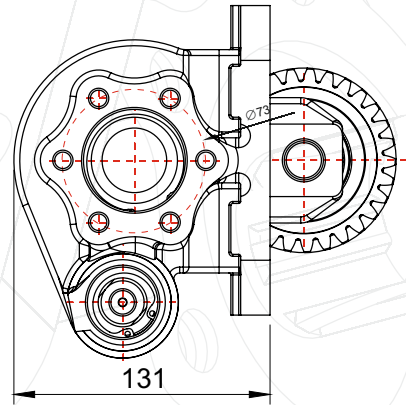
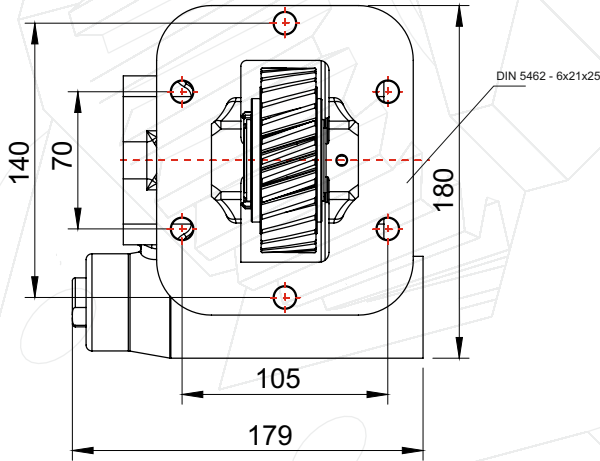
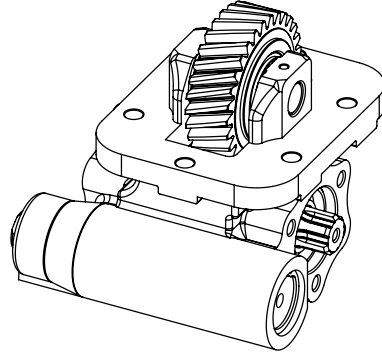
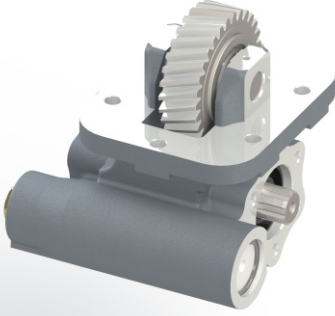


50617512P0



## GENEL BİLGİLER/GENERAL DATA

P.T.O. KODU / P.T.O. CODE	50617512P0	
Tork / Torque	23 Kgm	225 Nm
Güç(1000 rpm) / Power	29,4 Hp	22 Kw
Devir / Speed	1000 rpm	1000 rpm
Oran / Ratio	1/1,03	1/1,03
Ağırlık / Weight	13 kg	28,6 lb
Bağlantı / Mounting	Sol	Left
Kumanda / Control	Pnömatik	Pneumatic
Dönüş / P.T.O. Rotation	Sağ - UNI	Right - UNI

## Ana Şanzıman / Gearbox

MYY5T / MOY-9F / MOY-9H / MOYCR  
/ MYY-6S / MOYMB / MOYNA MYY-5S  
/ MYY-6P / MYY-5A / MOYGX / MOY4N  
/ MOYNB / MOYNC / MYY5R / MYY5D  
/ MOYPN MOYMC / MOYMR  
( 5,315-5,979 )

## Kullanılan Bazı Araçlar / Used Vehicles

4.3 NPR 66-71-75-77 ISUZU / NKR 250 / NPR  
250 / NKR 66 E2L / HINO 300 SERİ 4X2  
ELF130 / NPR66L / NQR71PL / NPR85 / 4.3  
NPR70 / NKR66E / NPR66P / NQR71R / NPR  
66 LL / HINO DUTRO NQR71PL / NPR 75  
LONG / NLR / NLR LONG / NNR / NNR  
LONG / NPR 75 / N 10 / NPR 8 / NPR 8 LONG

Seçeğiniz pompanın dönüş yönü, P.T.O. dönüş yönü ile ters olmalıdır.  
The rotation of the chosen pump has to be opposite with the rotation of P.T.O.

P.T.O. montaj edildikten sonra ana şanzıman yağını tamamlayın.  
Fill the oil of the gear box after mounting the P.T.O.