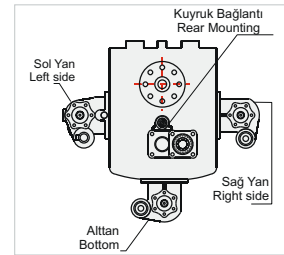
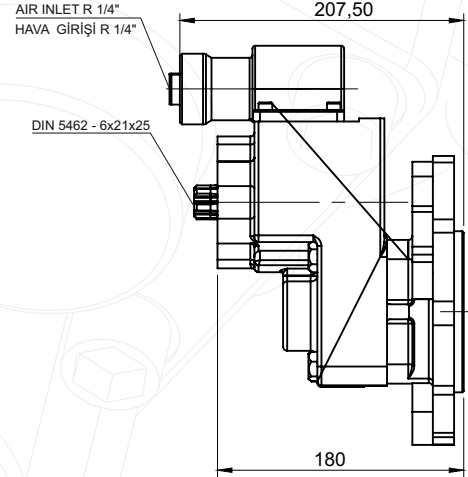
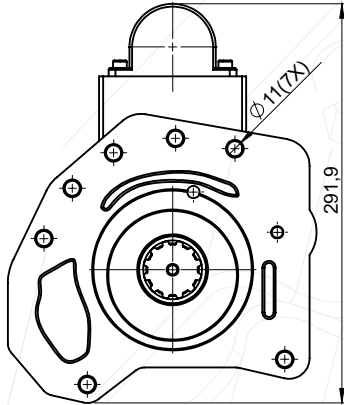
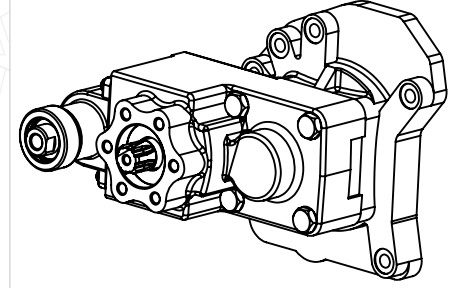
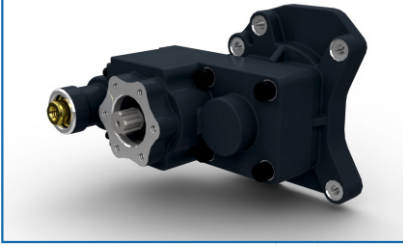


50124311P0



GENEL BİLGİLER/GENERAL DATA

P.T.O. KODU / P.T.O. CODE	50124311P0	
Tork / Torque		
Güç(1000 rpm) / Power		
Devir / Speed	650 rpm	650 rpm
Oran / Ratio	1/1,2	1/1,2
Ağırlık / Weight	13 kg	28,6 lb
Bağlantı / Mounting	Kuyruk	Rear
Kumanda / Control	Havalı	Pneumatic
Dönüş / P.T.O. Rotation	Sol - UNI	Left - UNI

Seçeceğiniz pompanın dönüş yönü, P.T.O. dönüş yönü ile ters olmalıdır.
The rotation of the choosen pump has to be opposite with the rotation of P.T.O.

Ana Şanzıman / Gearbox	Kullanılan Bazı Araçlar / Used Vehicles
G 100-12 / 10	1528-1823-1828-1924-2523-2528-2623-2628-2832-3224-3228 AXOR / 823-923-1023-1223-1225-1228-1323-1328-1523-1528-1828-2528-2628 ATEGO

P.T.O. montaj edildikten sonra ana şanzıman yağını tamamlayın.
Fill the oil of the gear box after mounting the P.T.O.