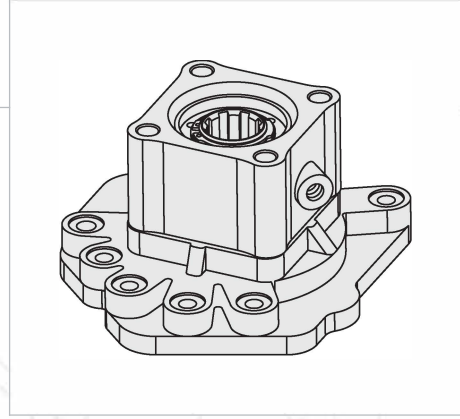
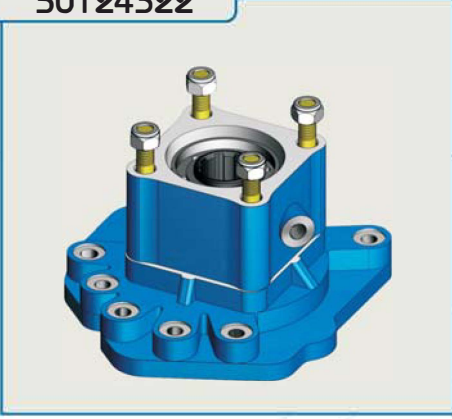
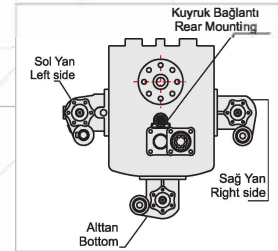
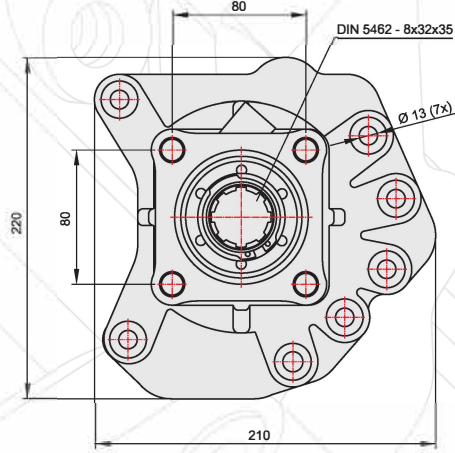
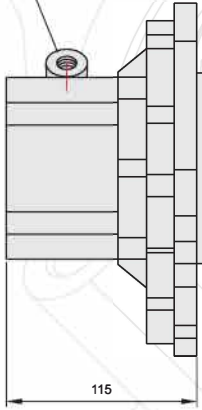


50124322



AIR INLET R 1/4"
HAVA GİRİŞİ R 1/4"



POWER TAKE OFF

P.T.O.

GENEL BİLGİLER/GENERAL DATA

P.T.O. KODU / P.T.O. CODE	50124322	
Tork / Torque	24 Kg _m	235,5 Nm
Güç(1000 rpm) / Power	16 Hp	12 Kw
Devir / Speed	500 rpm	500 rpm
Oran / Ratio	1/1	1/1
Ağırlık / Weight	10,5 kg	23,3 lb
Bağlantı / Mounting	Kuyruk	Rear
Kumanda / Control	Havalı	Pneumatic
Dönüş / P.T.O. Rotation	Sağ - ISO	Right - ISO

Ana Şanzıman / Gearbox	Kullanılan Bazı Araçlar / Used Vehicles
G 100	1528-1823-1828-1924-2523-2528-2623-2628-2832-3224-3228-AXOR
	1223-1323-1523-1328-1828-2528-2628 ATEGO

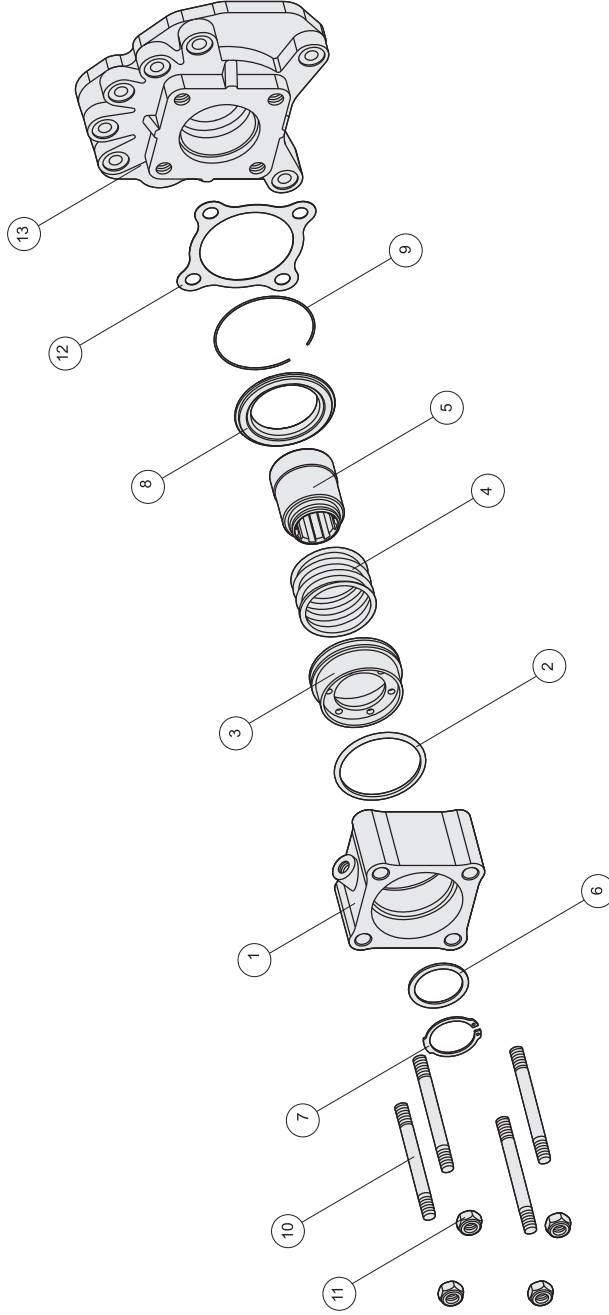
Seçeğinizin pompanın dönüş yönü, P.T.O. dönüş yönü ile ters olmalıdır.
The rotation of the chosen pump has to be opposite with the rotation of P.T.O.

P.T.O. montaj edildikten sonra ana şanzıman yağını tamamlayın.
Fill the oil of the gear box after mounting the P.T.O.

P.T.O.

POWER TAKE OFF

ÜRÜN MONTAJ ve PARÇA LİSTESİ
PRODUCT ASSEMBLY and PART LIST



MERCEDES G100-1

Adet	Parça No	Parça Adı	Kod
1	1	Zf1 Gövde	50124322-01
1	2	X-ring	50124322-02
1	3	Zf1 Piston	50124322-03
1	4	Zf1 Yay	50124322-04
1	5	Zf1 Kavrama-40	50124322-05
1	6	42x52x2 Pul	50124322-06
1	7	471-42 Segman	50124322-07
1	8	Zf1 Ortalayıcı pul	50124322-08
1	9	1,70 Tel Segman	50124322-09
4	10	M12x120 Saplama	50124322-10
4	11	M12 Somun	50124322-11
1	12	Zf1 Conta	50124322-12
1	13	G100 Plate	50124322-13
19	TOPLAM PARÇA SAYISI		

www.cnc-world.com

CNC

MOBILE AND INDUSTRIAL HYDRAULIC

MERCEDES G100-1