

# CNC S-17

sectional directional control valve  
*dilimli hidrolik yön kontrol valfi*



## Index - İçindekiler

<b>Product Features</b> <i>Ürün Özellikleri</i>	92
<b>General Specifications</b> <i>Genel Özellikler</i>	92
<b>Order Coding</b> <i>Sipariş Kodlama</i>	93
<b>Dimensional Data</b> <i>Ölçüsel Bilgi</i>	94
<b>Performance Data</b> <i>Performans Eğrileri</i>	95
<b>Hydraulic Specification</b> <i>Hidrolik Devre</i>	96
<b>Inlet Options</b> <i>Basınç (P) Hattı Opsiyonları</i>	97
<b>Working Section</b> <i>Dilim</i>	100
<b>Spool Positioners</b> <i>Sürgü Kontrolleri</i>	101
<b>Spool Options</b> <i>Sürgü Tipleri</i>	107
<b>Auxiliary Valves</b> <i>Yardımcı Valfler</i>	109
<b>Lever Types</b> <i>Sap Tipleri</i>	111
<b>Outlet Options</b> <i>Tank (T) Hattı Opsiyonları</i>	114

# General Specifications

## Genel Özellikler

### Product Features

CNC S-17 is a compact, flexible and robust control valve for operating pressures up to 350 bar and pump flows up to 90 lpm.

The valve is designed for high performance for open and closed center hydraulic systems

### Accessories

Valve is equipped with an adjustable main relief valve  
Available in parallel (in standard), series, tandem circuit  
Load Hold Check valves in each section  
Auxiliary Valves  
Wide range of spool options  
Interchangable Ø16 mm Spools  
Carry-over and closed center option  
Load Sense Option

### Controls

Manual, Pneumatic, Electro-Pneumatic, Hydraulic, Electro-Hydraulic, Inlet proportional, Electro-Hydraulic Proportional, Mechanical Joystick and Remote Cable Control

### Özellikler

CNC S-17 serisi 90 lt/dk ve 350bar'a kadar maksimum performansı gösteren, gelişmiş özellikleriyle birçok mobil uygulama için ideal kontrol kumandasıdır.

### Aksesuarlar

Ayarlanabilir Ana Emniyet Valfi  
Paralel, Seri, Tandem Devre İmkânı  
Her Dilimde Yük Tutma Valfleri  
Yardımcı Valfler  
Çeşitli Sürgü Tipleri  
Değiştirilebilir Ø16 mm Sürgüler  
Carry-over ve Kapalı Merkez İmkânı  
LS Opsiyonu

### Kontrol

Manuel, Pnömatik, Elektro-Pnömatik, Hidrolik, Elektro-Hidrolik, Elektro-Hidrolik Oransal, Giriş Oransal, Mekanik Joystick, Halat Kontrol

## Standard Material Specifications Standard Malzeme Özellikleri

High Resistance Cast Iron Body *Döküm Gövde*  
Hard Chromium Plated Interchangable Spools *Sertleştirilmiş Krom Kaplama Sürgüler*  
Steel spring caps *Çelik Yay Kapakları*  
Aluminium Lever Caps *Aluminyum Sap Kapakları*  
NBR Seals *NBR Sızdırmazlık Elemanları*

## Working Conditions Çalışma Şartları

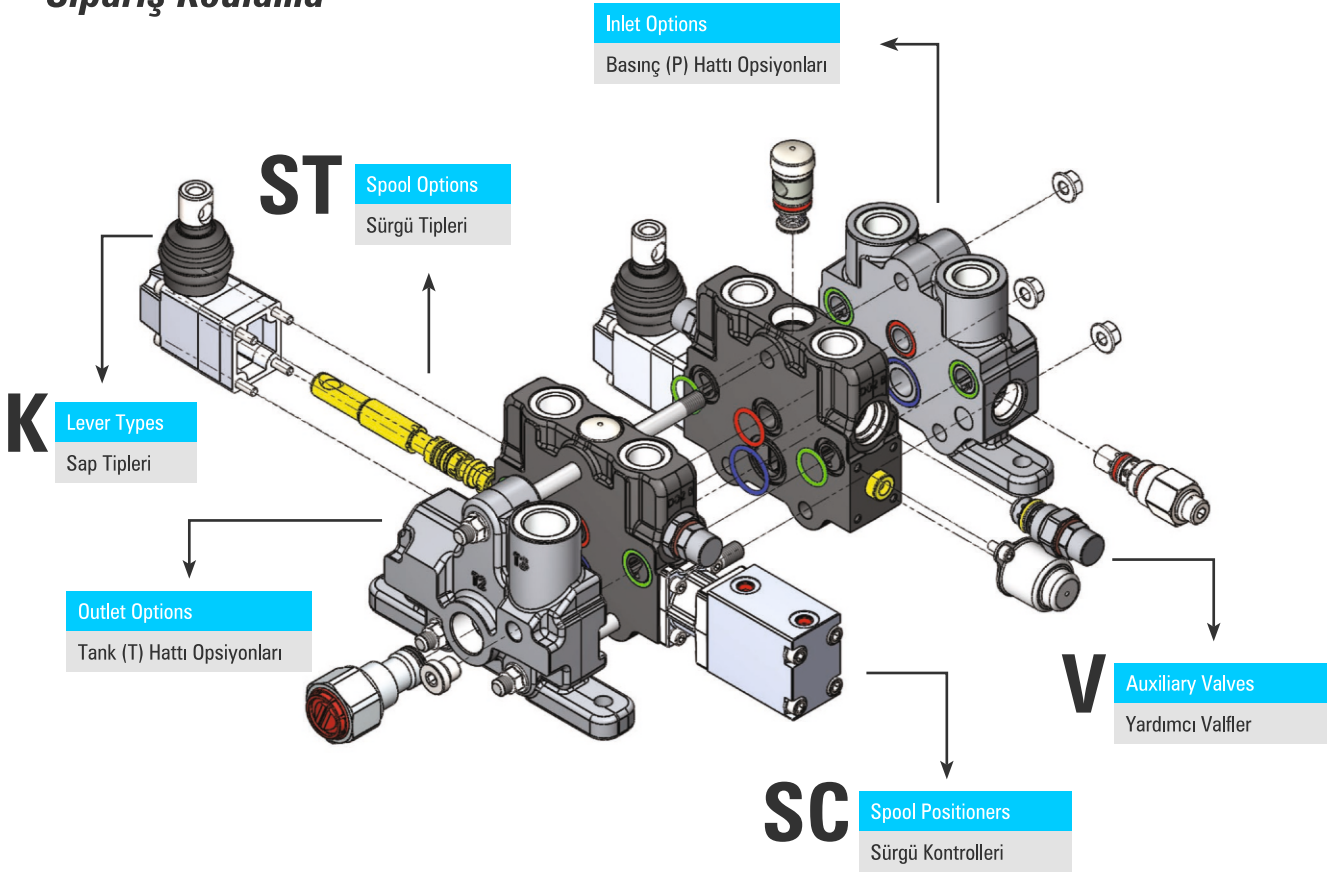
Recommended Oil Viscosity Range <i>Önerilen Yağ Vizkozite Aralığı</i>	<b>10 cSt to 75 cSt</b>
Recommended Oil Filtering <i>Önerilen Yağ Filtrasyonu</i>	<b>β 10 ≥ 75</b>
Recommended Fluid Temperature Range <i>Önerilen Çalışma Sıcaklığı (°C)</i>	<b>-20 to +80</b>
Environmental Temperature Range <i>Önerilen Ortam Sıcaklığı (°C)</i>	<b>-35 to +60</b>
Maximum Contamination Level <i>Maksimum Kirlilik Seviyesi</i>	<b>Class 10 (NAS 1638) 19/16 (ISO 4406)</b>

## Technical Specifications Teknik Özellikler

Nominal Flow <i>Debi</i>	<b>80 lpm</b>	<b>21 US gpm</b>
Number of Spools <i>Dilim Sayısı</i>	<b>1 - 9</b>	
Maximum Working Pressure <i>Maksimum Çalışma Basıncı</i>	<b>350 bar</b> 250 bar in Series Circuit	<b>5000 psi</b> 3600 psi in Series Circuit
Maximum Back Pressure <i>Maksimum Tank Hattı Basıncı</i>	<b>30 bar</b>	<b>430 psi</b>
Internal Leakage <i>İç Kaçak Değeri</i>	<b>4 cc - 9 cc</b> (100 Bar; 32 cSt, 40 °C)	<b>0,24 - 0,54 in<sup>3</sup>/m</b> (1450 psi; 32 cSt, 104°F)

# Order Coding

## Sipariş Kodlama



CNC S-172 - IL-001(180)-B01 / - B SC1 ST11 V13 K1 / B SC15 ST1 V13 K1 / B - H

1

2

3

4

1

### Valve Type Valf Tipi

**CNC S-17** Valve Series Valf Serisi  
2 Number of Spools Sürgü Sayısı

2

### Inlet Options Pompa (P) Hattı Opsiyonları

**IL** Side of Inlet Section Basınç Kapağı Yönü  
**001** Configuration of Inlet Section Basınç Kapağı Konfigürasyonu  
**180** Pressure Setting Basınç Değeri  
**B01** Inlet Position and Port Thread Bağlantı ve Paso Tipi

3

### Working Section Dilim

**B** Port Thread Port ölçüleri  
**SC1** Spool Positioners Sürgü Kontrolleri  
**ST11** Spool Options Sürgü Tipleri  
**V13** Auxiliary Valves Yardımcı Valfler  
**K1** Lever Types Sap Tipleri

4

### Outlet Options Tank (T) Hattı Opsiyonları

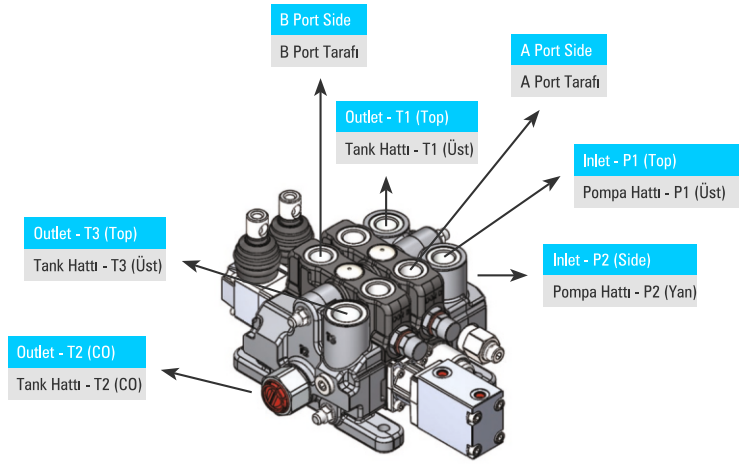
**B** Port Thread Port ölçüleri  
**H** Outlet Options Tank Hattı Opsiyonları

This part must be coded separately for each working section. If adjacent sections are identical then code the first section and put number of identical sections with a cross. Example for 3 identical sections; CNC S-174/IL-001(180)-B01/BSC1ST1V7(A160B160)K1/3XBSC4ST1V1(A140B150)K3/B-H

Bu bölümdeki kodlama her dilim için ayrı ayrı yapılmalıdır. Eğer birbirini takip eden ve aynı konfigürasyona sahip dilim isteniyorsa, aynı dilimler, dilim sayısı başa getirilip yanına çarpı konacak şekilde kodlanabilir. Örnek Kodlama; CNC S-174/IL-001(180)-B01/BSC1ST1V7(A160B160)K1/3XBSC4ST1V1(A140B150)K3/B-H

# Dimensional Data

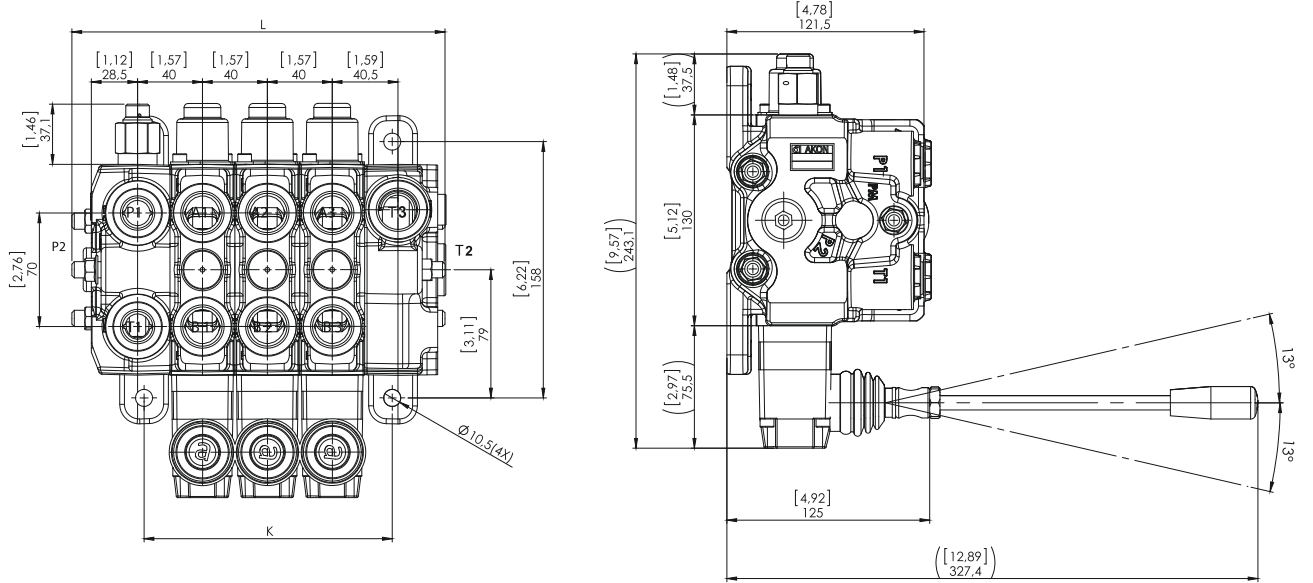
## Ölçüsel Bilgi



### Standard & Optional Threads Standart ve Opsiyonel Ölçüler

Thread Paso Tipi	Code Kod	P1 - P2 - T1	A/B	T3	T2(CO)
BSP(Standard)	B	G 1/2"	G 1/2"	G 1/2"	G 3/4"
	C	G 3/4"	G 3/4"	G 3/4"	G 3/4"
UN-UNF	M	7/8 – 14 (SAE 10)	7/8 – 14 (SAE 10)	7/8 – 14 (SAE 10)	G 3/4"
	N	1 1/16 – 12 (SAE 12)	1 1/16 – 12 (SAE 12)	1 1/16 – 12 (SAE 12)	G 3/4"
METRIC	Z	M22x1,5	M22x1,5	M22x1,5	G 3/4"

BSP threads are standard threads. Its necessary to code the port thread in inlet, working and outlet section. Example coding; KV171/IL-001(180)-B01/BSC1ST1/B-H  
Valflerimiz standart olarak BSP Diş üretilmektedir. Talep edilen port ölçüleri basınç kapağında, her dilimin başında ve dönüş kapağında kodlanır. Örnek Kodlama; KV171/IL-001(180)-B01/BSC1ST1/B-H



### Dimensions & Weight Ölçüler ve Ağırlık

Type / Tip	K		L		Weight Ağırlık	
	mm	inc	mm	inc	kg	lb
CNC S-171	73	2.87	155	6.10	9.85	21.71
CNC S-172	113	4.45	195	7.68	13.85	30.53
CNC S-173	153	6.02	235	9.25	17.85	39.35
CNC S-174	193	7.60	275	10.83	21.85	48.17
CNC S-175	233	9.17	315	12.40	25.85	56.99
CNC S-176	273	10.75	355	13.98	29.85	65.80
CNC S-177	313	12.32	395	15.55	33.85	74.62
CNC S-178	353	13.90	435	17.13	37.85	83.44
CNC S-179	393	15.47	475	18.70	41.85	92.26

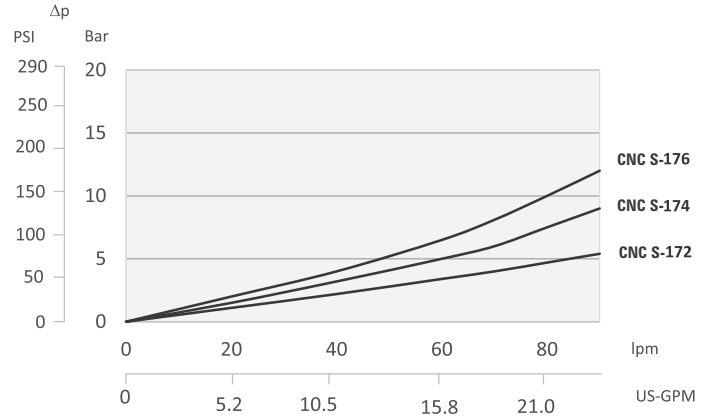
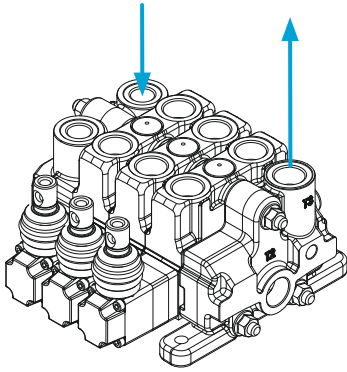
Given weights are for standard configurations.  
Ağırlıklar standart konfigürasyon için verilmiştir.

# Performance Data

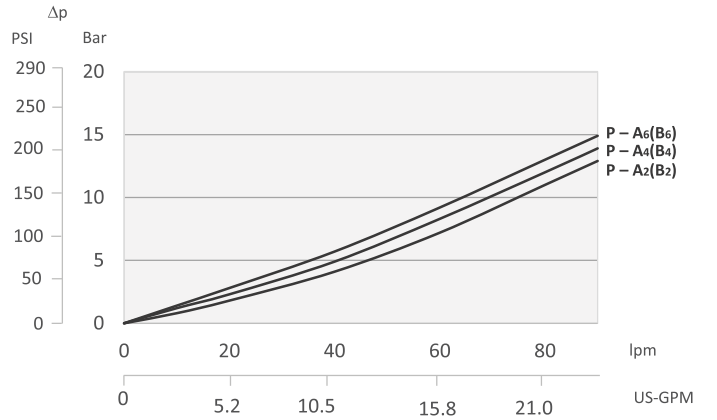
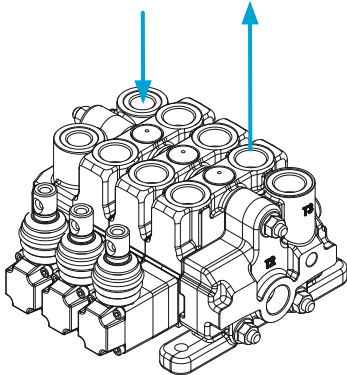
## Performans Eğrileri

### Pressure Drop Curves Basınç Kayıp Eğrileri

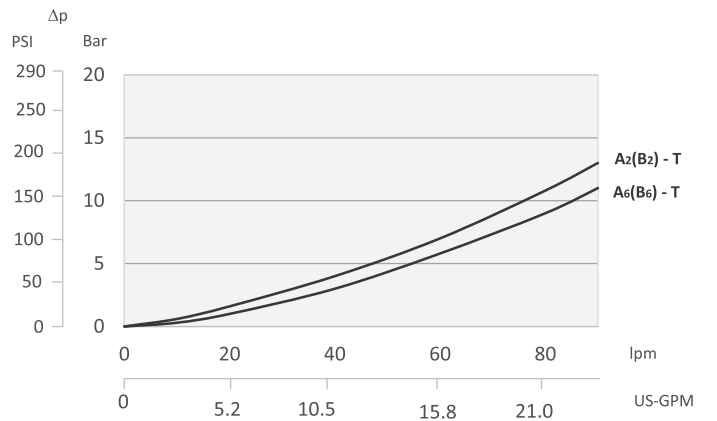
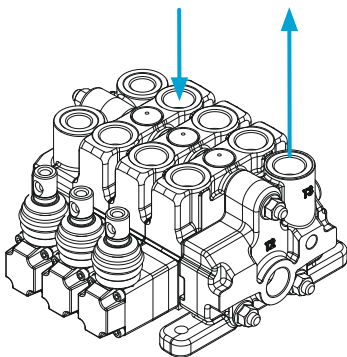
#### P - T



#### P - A/B



#### A/B - T



Measured with spool type ST1 and 32 cSt hydraulic oil @ 40°C.  
ST1 sürgü ve 32 cSt hidrolik yağ ile 40°C'de ölçülmüştür.

# Hydraulic Specifications

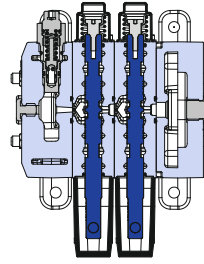
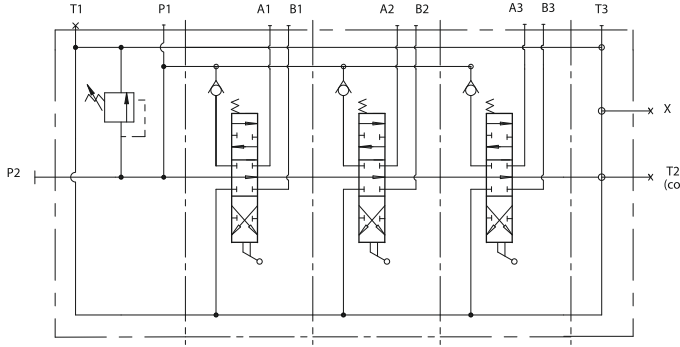
## Hidrolik Devre

### Parallel Circuit *Paralel Devre*

Code / Kod

**NO  
CODE**

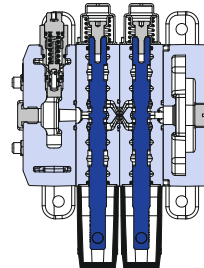
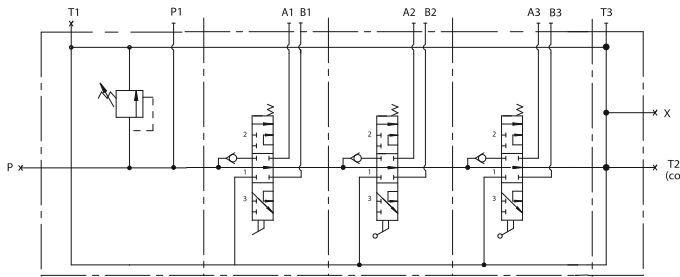
Standard configuration; Parallel circuit with upper inlet and outlet.  
*Standart konfigürasyon; Paralel devre, P1 ve T3 açık, P2, T1 ve T(CO) kör şeklindedir.*



### Series Circuit *Seri Devre*

Code / Kod

**S**



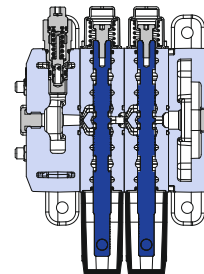
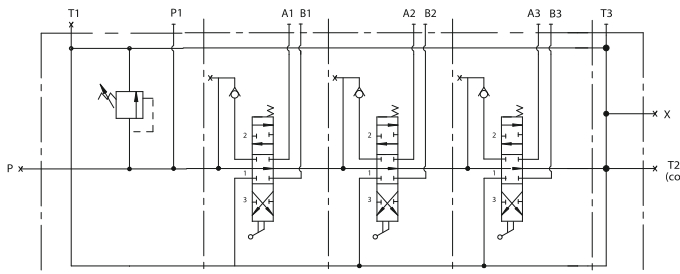
Series Circuit is coded with «S» before each series working section demanded.  
Example Coding; CNC S-172/IL-001(180)-B01/SBSC1ST1/SBSC1ST1/B  
*Seri devre her seri dilimin önüne «S» gelecek şekilde kodlanır.*  
Örnek Kodlama; CNC S-172/IL-001(180)-B01/SBSC1ST1/SBSC1ST1/B

Maximum working pressure is 250 bar.  
*Maksimum çalışma basıncı 250 bar.*

### Tandem Circuit *Tandem Devre*

Code / Kod

**T**

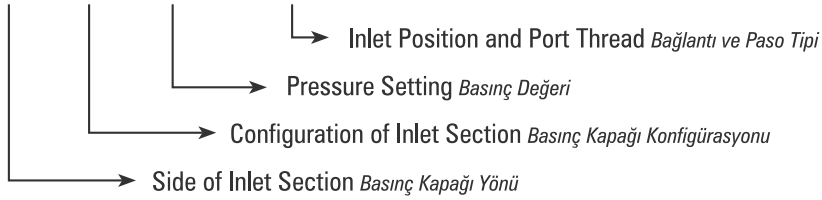


Tandem Circuit is coded with «T» before each series working section demanded.  
Example Coding; CNC S-172/IL-001(180)-B01/TBSC1ST1/TBSC1ST1/B  
*Seri devre her seri dilimin önüne «T» gelecek şekilde kodlanır.*  
Örnek Kodlama; CNC S-172/IL-001(180)-B01/TBSC1ST1/TBSC1ST1/B

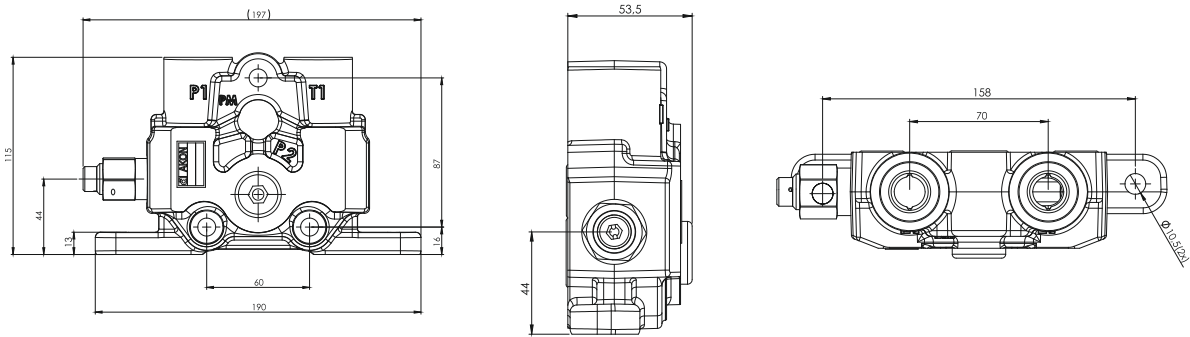
# Inlet Option

## Basınç (P) Hattı Opsiyonları

CNC S-171 / **IL-001 (180) - B01** / B SC4 ST11 V13 K3 / B



### Inlet Cover *Basınç Kapağı*

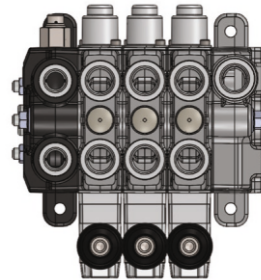
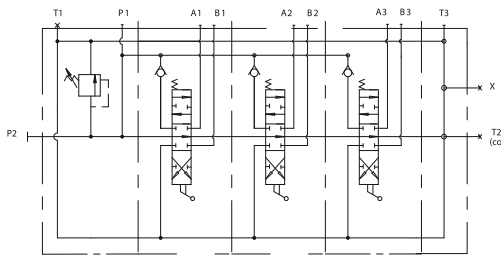


### Side of Inlet Section *Basınç Kapağı Yönü*

Code / Kod

**IL**

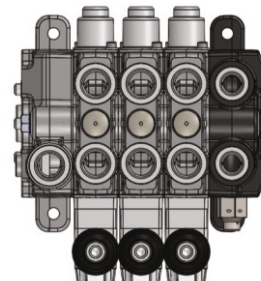
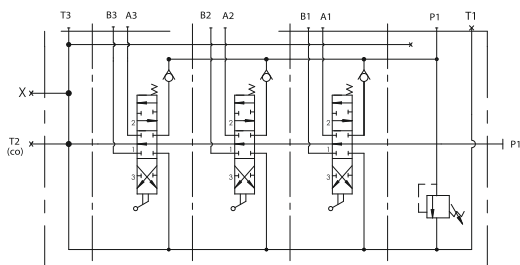
### Valve with left inlet *Sol Basınç Kapağı*



Example coding *Örnek kodlama*  
CNC S-171 / IL-001 (180) - B01

Left inlet is standard onfiguration unless otherwise indicated.  
*Aksi belirtilmezse bu serili valfler sol basınç kapağı ile üretilir.*

### Valve with right inlet *Sağ Basınç Kapağı*



Example coding *Örnek kodlama*  
CNC S-171 / IR-001 (180) - B01

Code / Kod

**IR**

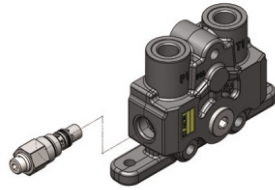
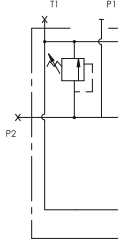
# Configuration of Inlet Section

## Basınç Kapağı Konfigürasyonu

### 001

A Side Direct Acting Main Relief Valve

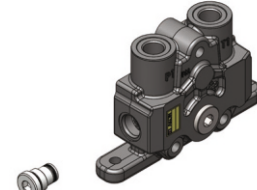
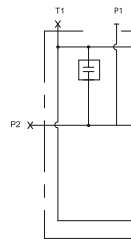
A Tarafı Regülatör



### 002

A Side Main Relief Valve Blanking Plug

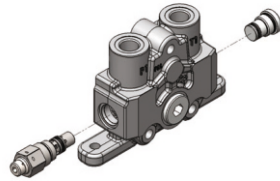
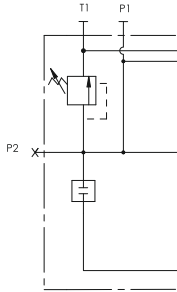
A Tarafı Kör Regülatör



### 003

A Side Direct Acting Main Relief Valve,  
B Side Main Relief Valve Blanking Plug

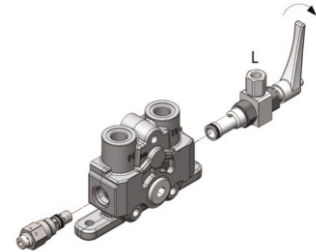
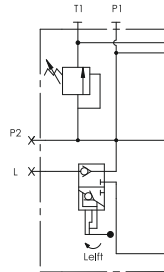
A Tarafı Regülatör, B Kör Regülatör



### 004

A Side Direct Acting Main Relief Valve,  
B Side Hydraulic Lock or Brake Valve

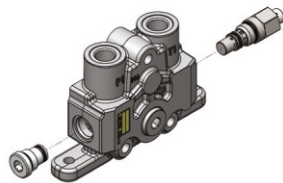
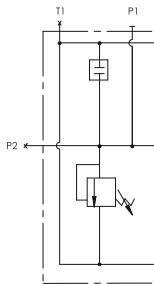
A Tarafı Regülatör, B Tarafı Kilit Valfi



### 005

A Side Main Relief Valve Blanking Plug,  
B Side Direct Acting Main Relief Valve

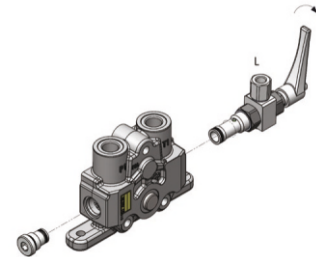
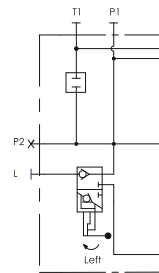
A Tarafı Kör Regülatör, B Tarafı Regülatör



### 006

A Side Main Relief Valve Blanking Plug,  
B Side Hydraulic Lock or Brake Valve

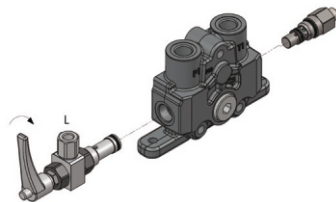
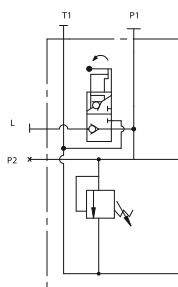
A Tarafı Kör Regülatör, B Tarafı Kilit Valfi



### 007

A Side Hydraulic Lock or Brake Valve  
B Side Direct Acting Main Relief Valve

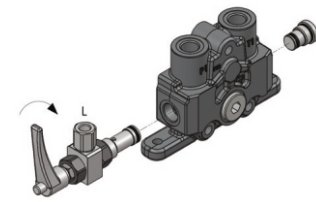
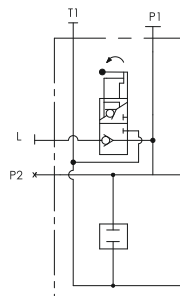
A Tarafı Kilit Valfi, B Tarafı Regülatör



### 008

A Side Hydraulic Lock or Brake Valve  
B Side Main Relief Valve Blanking Plug

A Tarafı Kilit Valfi, B Tarafı Kör Regülatör



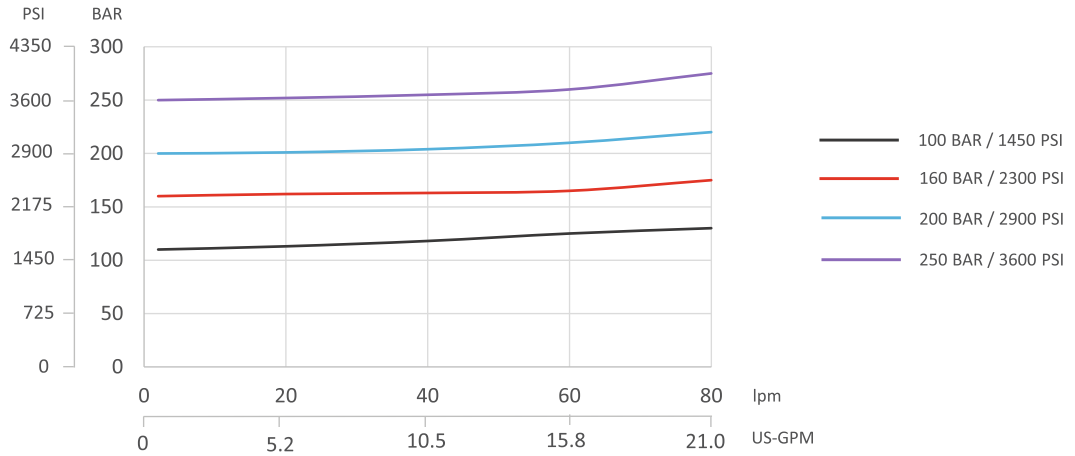
Please indicate the necessary pressure setting value. MRV is preset to 180 Bar at 15 lpm unless otherwise specified.  
Lütfen ayarlanmasını istediğiniz basınç değerini bildiriniz. Ürünler standart olarak 15 lt/dk'da 180 Bara ayarlanır.



## Inlet Position and Thread Type *Bağlantı ve Paso Tipi*

Code <i>Kod</i>	Port Threads <i>Paso Tipi</i> P1, P2, T3	Connection Port <i>Bağlantı Portu</i>	Steel Plug <i>Kör Tapa</i>	Load Sense Connection <i>Load Sense Bağlantısı</i>
B01	G 1/2"	P1	P2, T1	-
B02	G 1/2"	P1	T1	LS(G 1/4")
B03	G 1/2"	P2	P1, T1	-
C01	G 3/4"	P1	P2, T1	-
C02	G 3/4"	P1	T1	LS(G 1/4")
C03	G 3/4"	P2	P1, T1	-

## Main Relief Valve Performance Data *Ana Emniyet Valfi Performans Eğrisi*

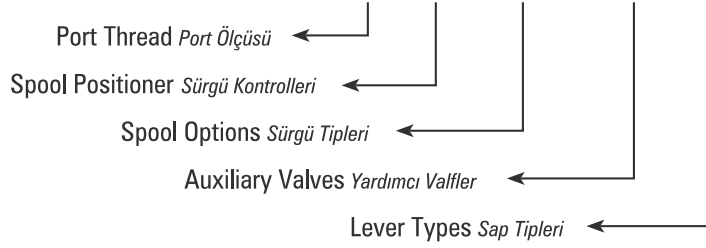


Measured with 32 cSt hydraulic oil @ 40°C and neglected tank line pressure.  
32 cSt hidrolik yağ ile 40°C'de, tank hattı basıncı ihmal edilerek ölçülmüştür.

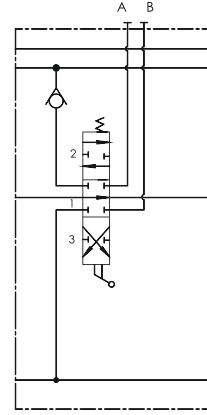
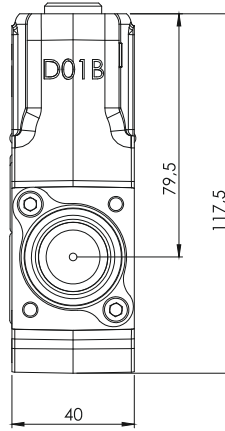
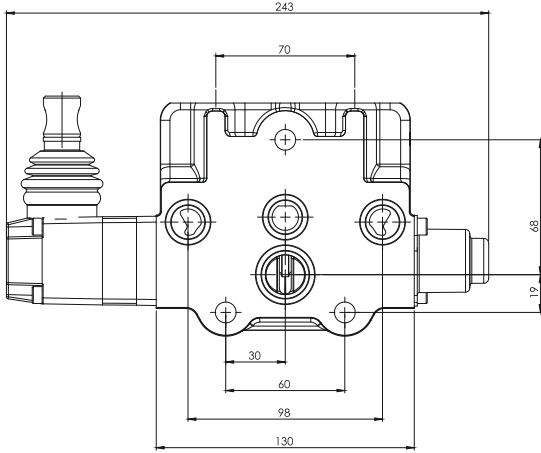
# Working Section

## Dilim

CNC S-171 / IL- 001 (180) - B01 / **B SC4 ST11 V13 K3** / B

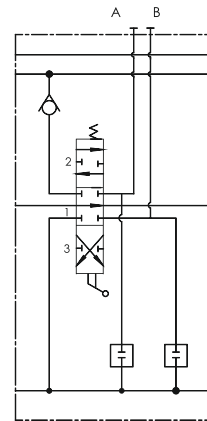
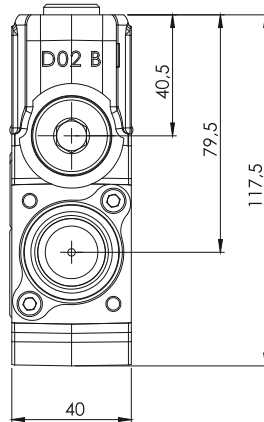
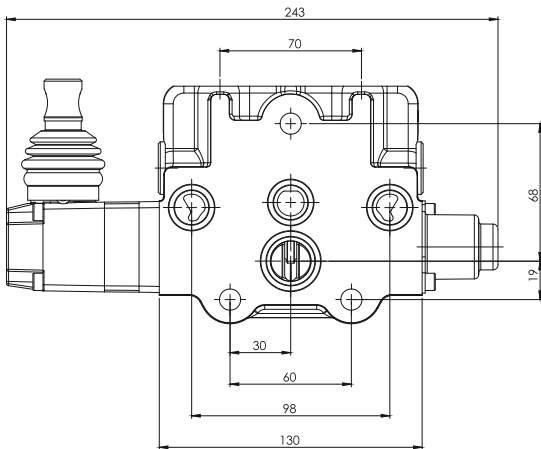


### Working section without port relief cavity *Standart Dilim*



Hydraulic Circuit  
*Hidrolik Devre*

### Working section with port relief cavity *Antişok portları işlenmiş dilim*



Hydraulic Circuit  
*Hidrolik Devre*

# Spool Positioners

## Sürgü Kontrolleri

CNC S-171 / IL- 001 (180) - B01 / B **SC4** ST11 V13 K3 / B

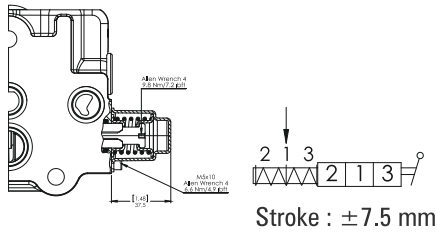
↳ Spool Positioners Sürgü Kontrolleri

### Spool Positioners with Spring Return *Yay Dönüslü Sürgü Kontrolleri*

## SC1

3 Positions Spring Return

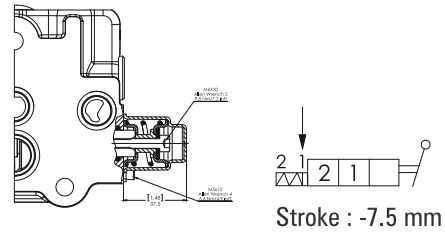
3 Pozisyon Yaylı



## SC5

2 Positions Spring Return

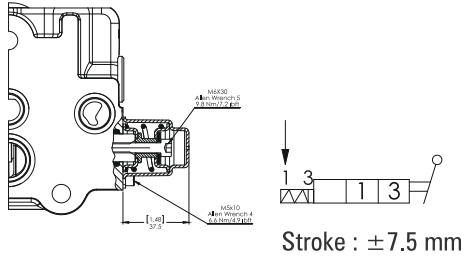
2 Pozisyon Yaylı



## SC6

2 Positions Spring Return

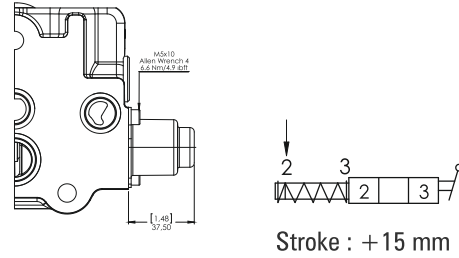
2 Pozisyon Yaylı



## SC11

2 Positions Spring Return in 3rd Position

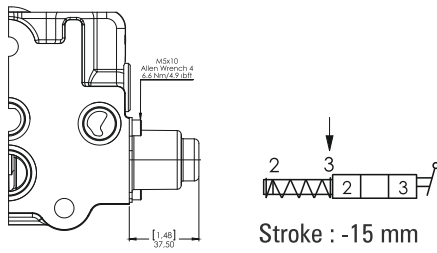
2 Pozisyon, 3. Pozisyona Yaylı



## SC12

2 Positions Spring Return in 2nd Position

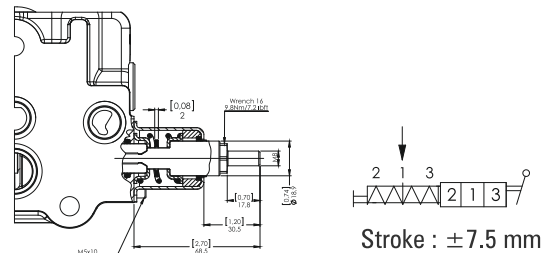
2 Pozisyon, 2. Pozisyona Yaylı



## SC25

3 Position Spring Return with male M8 pin extension for dual control

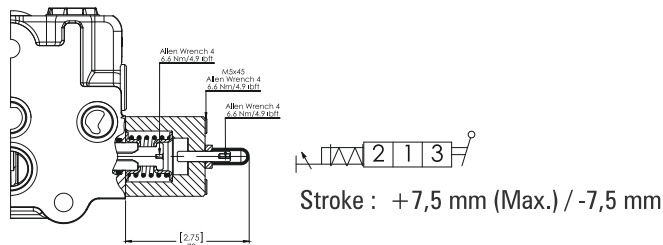
3 Pozisyon Yaylı, M8 Erkek Uzatmalı



## SC33

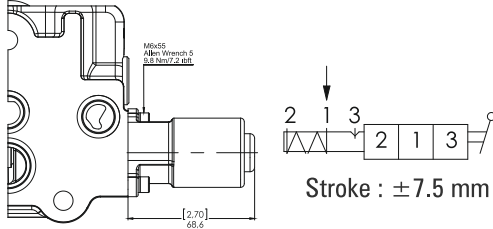
3 Position Spring Return with stroke limiter

3 Pozisyon Yaylı, Strok Limitleyici

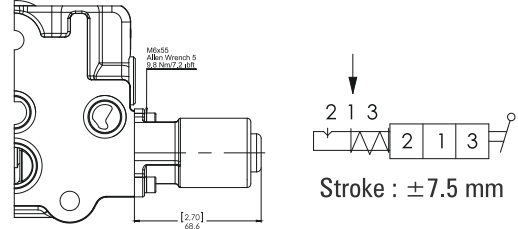


## Spool Positioners with Detent *Detanlı Sürgü Kontrolleri*

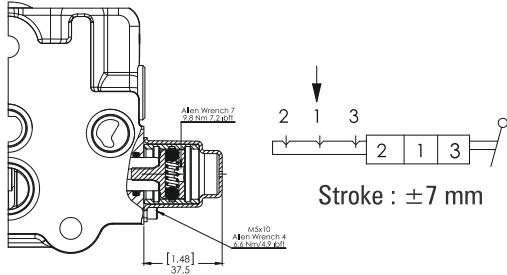
### SC2 3 Position Spring Return, Detent in Pos. 3 3 Pozisyon Yaylı, 3.Pozisyon Detantlı



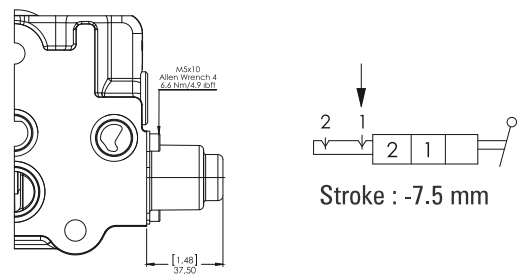
### SC3 3 Position Spring Return, Detent in Pos. 2 3 Pozisyon Yaylı, 2.Pozisyon Detantlı



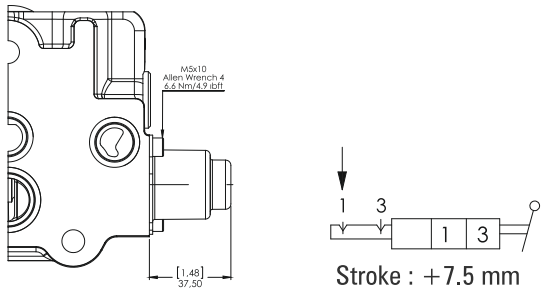
### SC4 3 Position Detent in All Positions 3 Pozisyon Detantlı



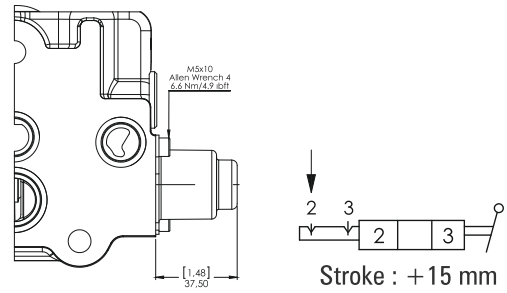
### SC7 2 Position Detent 2 Pozisyon Detantlı



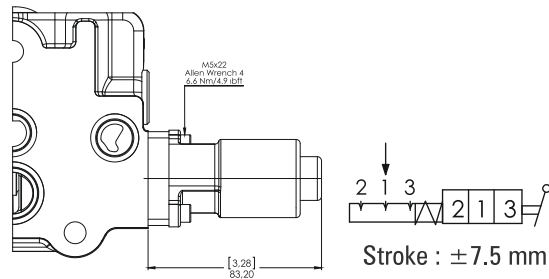
### SC8 2 Position Detent 2 Pozisyon Detantlı



### SC13 2 Position Detent 2 Pozisyon Detantlı



### SC28 3 Position Spring Centered with Detent 3 Pozisyon Yaylı ve Detantlı

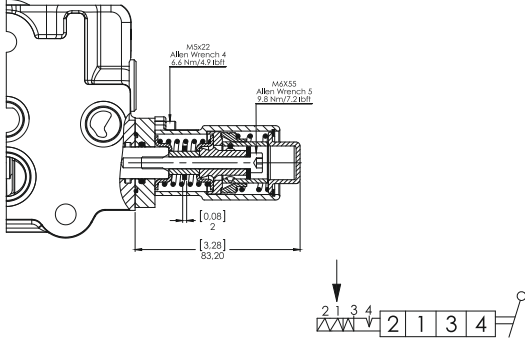


## 4 Position a Side Spool Positioners 4 Pozisyon A Tarafı Sürgü Kontrolleri

### SC9

4 Position Spring Return, Detent in 4th Pos.

4 Pozisyon Yaylı, 4.Pozisyon Detantlı



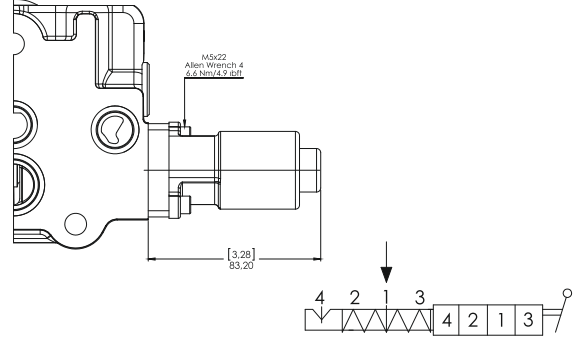
Used with Spool ST9B  
ST9B Sürgü ile kullanılır

Stroke : ±6 mm / +4.5 mm

### SC23

4 Position Spring Return, Detent in 4th Pos.

4 Pozisyon Yaylı, 4.Pozisyon Detantlı



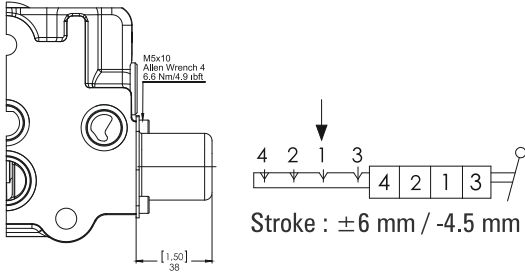
Used with Spool ST9A  
ST9A Sürgü ile kullanılır

Stroke : ±6 mm / -4.5 mm

### SC10

4 Position Detent in All Positions

4 Pozisyon Tüm Pozisyonlar Detantlı



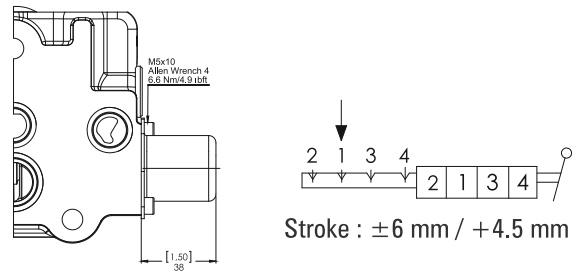
Used with Spool ST9A  
ST9A Sürgü ile kullanılır

Stroke : ±6 mm / -4.5 mm

### SC24

4 Position Detent in All Positions

4 Pozisyon Tüm Pozisyonlar Detantlı



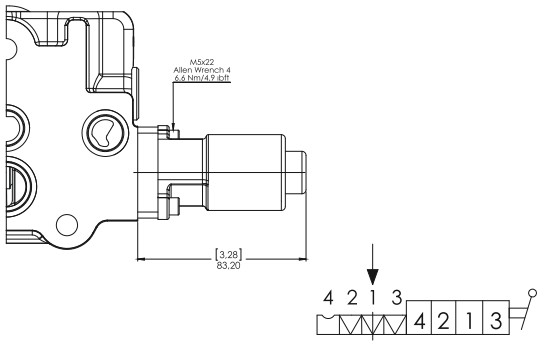
Used with Spool ST9B  
ST9B Sürgü ile kullanılır

Stroke : ±6 mm / +4.5 mm

### SC21

4 Position Spring Return, Feel Detent in 4th Pos.

4 Pozisyon Yaylı, 4.Pozisyon Hissetmeli Detantlı



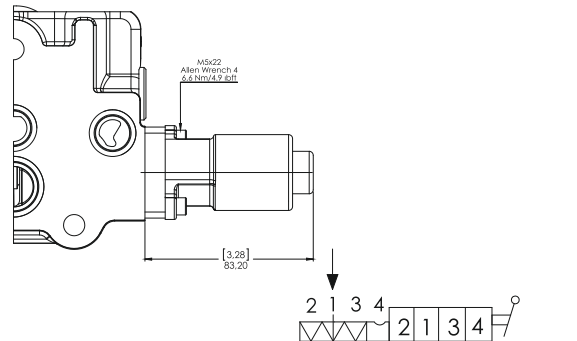
Used with Spool ST10A  
ST10A Sürgü ile kullanılır

Stroke : ±6 mm / -3.5 mm

### SC22

4 Position Spring Return, Feel Detent in 4th Pos.

4 Pozisyon Yaylı, 4.Pozisyon Hissetmeli Detantlı



Used with Spool ST10B  
ST10B Sürgü ile kullanılır

Stroke : ±6 mm / +3.5 mm

# SC15

On-Off Pneumatic Control

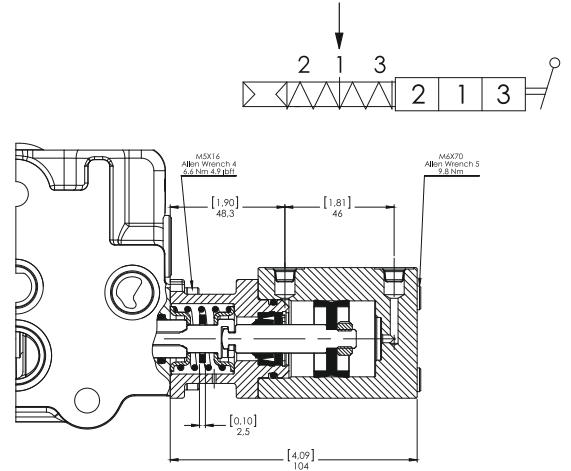
On-Off Pnömatik Kontrol

Pilot Pressure  
Pilot Basıncı

Min. 6 Bar / 85 PSI  
Max. 12 Bar / 170 PSI

Stroke (mm)  
Strok (mm)

± 7.5 mm



# SC30

On-Off Electro-Pneumatic Control

On-Off Elektro-Pnömatik Kontrol

Operation Characteristics *Çalışma Özellikleri*

Pilot Pressure  
Pilot Basıncı

Min. 6 Bar / 85 PSI  
Max. 12 Bar / 170 PSI

Coil Characteristics *Bobin Özellikleri*

Coil Connection Type  
Bobin Bağlantı Tipi

DIN 43650

Supply Voltage  
Voltaj

12VDC, 24VDC

Protection Type  
Koruma

IP65

Nominal Voltage Tolerance  
Nominal Voltaj Toleransı

± 10%

Duty cycle  
Görev Çevrimi

100%

Absorbed Power  
Güç

DC 8W

Coil Insulation Class  
Yalıtım Sınıfı

Class "H" coil as from  
the IEC 85 standard.  
Class "H" wire (200° C).

Maximum Temperatures  
Maksimum Çalışma Sıcaklığı

Class "F" 155°C  
Class "H" 180°C

Stroke (mm)  
Strok (mm)

± 7,5 mm

Kit Order Code  
Kit Sipariş Kodu

12VDC - 2005712000  
24VDC - 2005448000

Voltage

Code / Kod

12VDC

SC302

24VDC

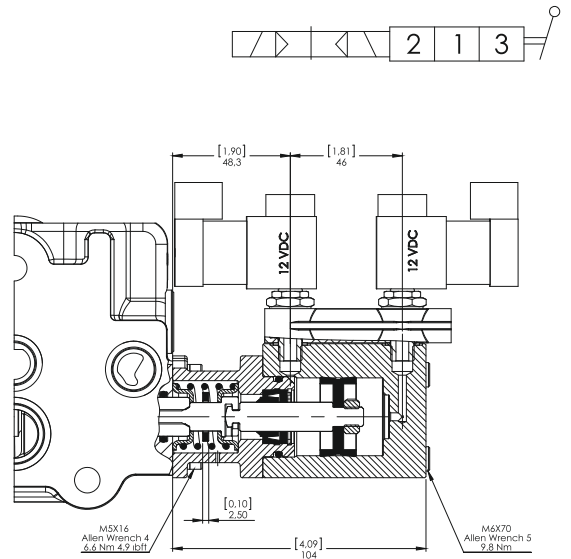
SC304

Stroke (mm)  
Strok (mm)

± 7,5 mm

Kit Order Code  
Kit Sipariş Kodu

12VDC - 2005712000  
24VDC - 2005448000



# SC16

On-Off Hydraulic Control

On-Off Hidrolik Kontrol

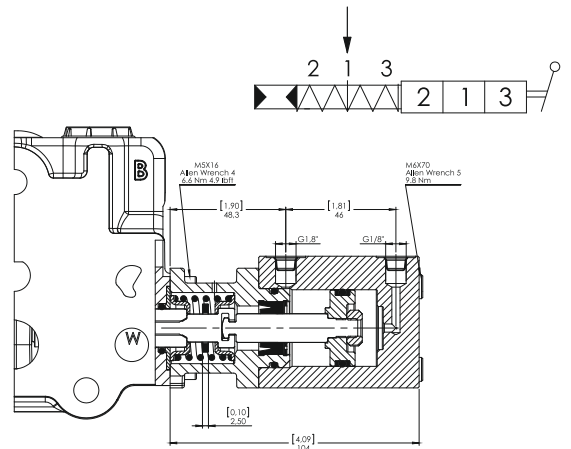
Operation Characteristics *Çalışma Özellikleri*

Pilot Pressure  
Pilot Basıncı

Min. 6 Bar / 85 PSI  
Max. 50 Bar / 720 PSI

Stroke (mm)  
Strok (mm)

± 7.5 mm



# SC17

On-Off Electro-Hydraulic Control

On-Off Elektro-Hidrolik Kontrol

Voltage	Code / Kod
12VDC	<b>SC172</b>
24VDC	<b>SC174</b>

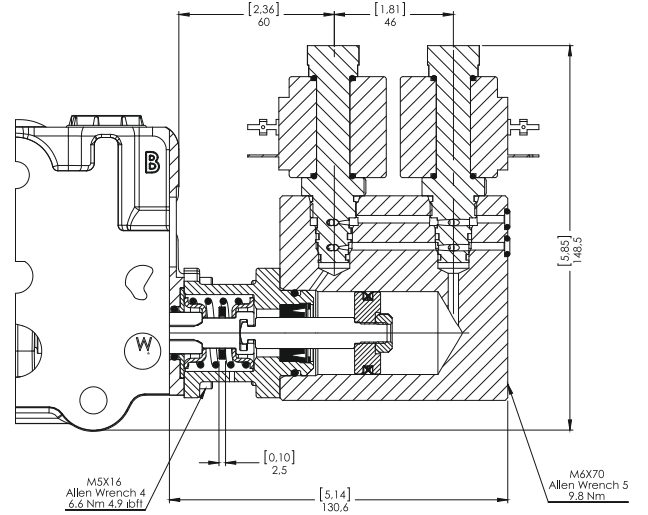
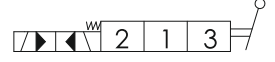
## Operation Characteristics Çalışma Özellikleri

Pilot Pressure Pilot Basıncı	Min. 10 Bar / 145 PSI Max. 25 Bar / 360 PSI
Back Pressure Tank Basıncı	Max. 3 Bar

## Coil Characteristics Bobin Özellikleri

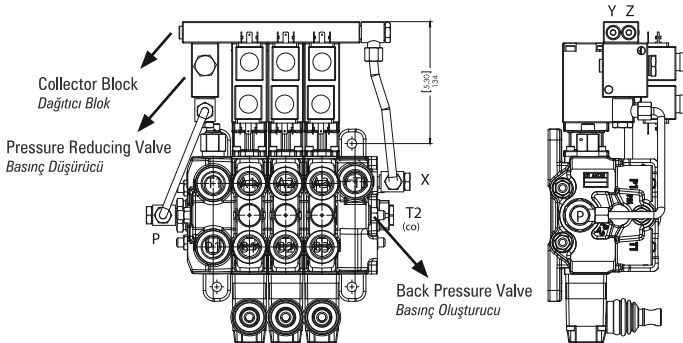
Coil Connection Type Bobin Bağlantı Tipi	DIN 43650
Supply Voltage Voltaaj	12VDC, 24VDC
Protection Type Koruma	IP65
Nominal Voltage Tolerance Nominal Voltaaj Toleransı	± 10%
Duty cycle Görev Çevrimi	100%
Absorbed Power Güç	18W
Coil Insulation Class Yalıtım Sınıfı	Class "F" 155°C
Maximum Temperatures Maksimum Çalışma Sıcaklığı	100°C

Stroke (mm) Strok (mm)	± 7.5 mm
---------------------------	----------



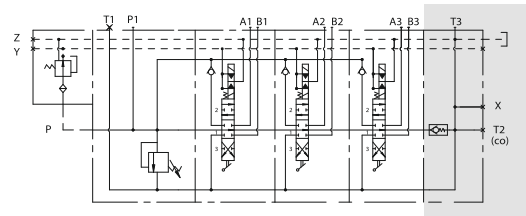
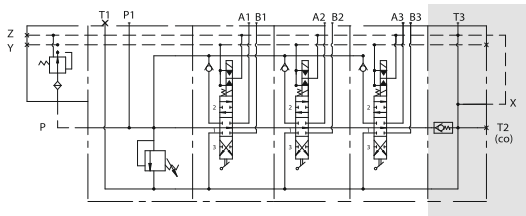
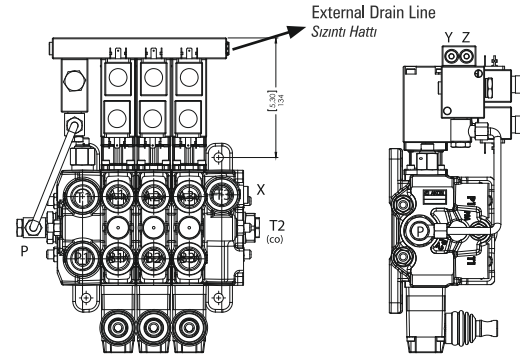
## Standard Connection and Hydraulic Circuit Standart Bağlantı ve Hidrolik Devre

Electro-hydraulic kit includes the collector block, pressure reducing valve, back pressure valve and the pipes.  
Elektro-hidrolik kiti, dağıtıcı blok, basınç düşürücü, basınç oluşturu ve borulardan oluşur.



## Alternative Connection and Hydraulic Circuit Alternatif Bağlantı ve Hidrolik Devre

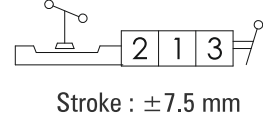
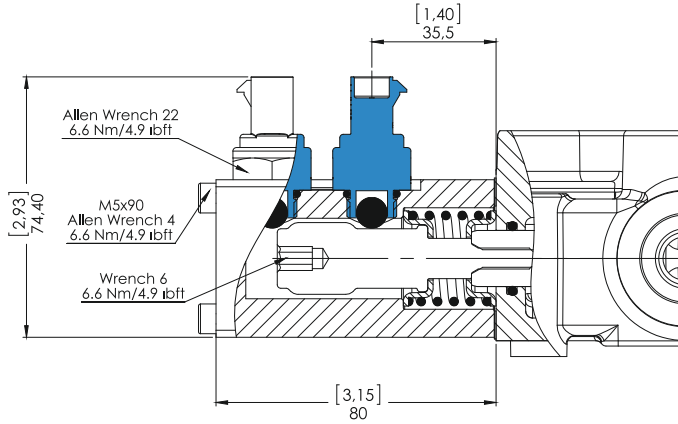
Attention!  
If tank pressure is more than 3 bar, an external drain line is recommended.  
Dikkat!  
Sistemde tank basıncı 3 barı geçmesi durumunda sızıntı hattının bağımsız olarak ve direkt tanka bağlanması önerilir.



# SC18

3 Positions, Microswitch Operation in both positions (NC)

3 Pozisyon, Çift Taraflı Mikrosviç Kontrol (NK)

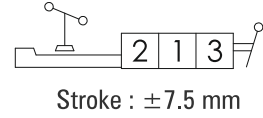
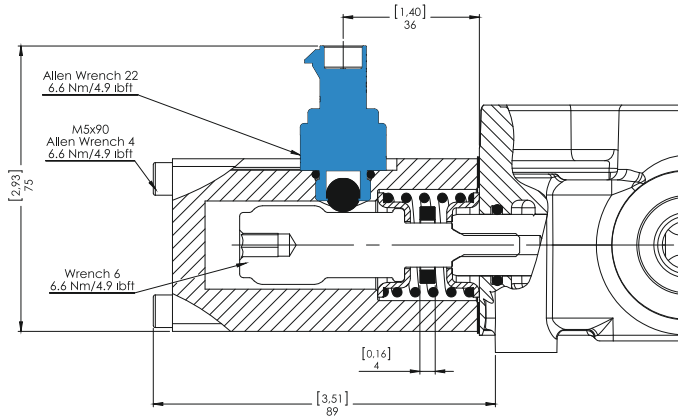


Configuration with normally open (NO) circuit is available, please contact our sales department.  
Normalde Açık (NA) konfigürasyon için lütfen satış departmanımızla bağlantıya geçiniz.

# SC18A

3 Positions, Microswitch Operation in 3rd Position

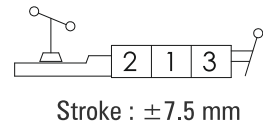
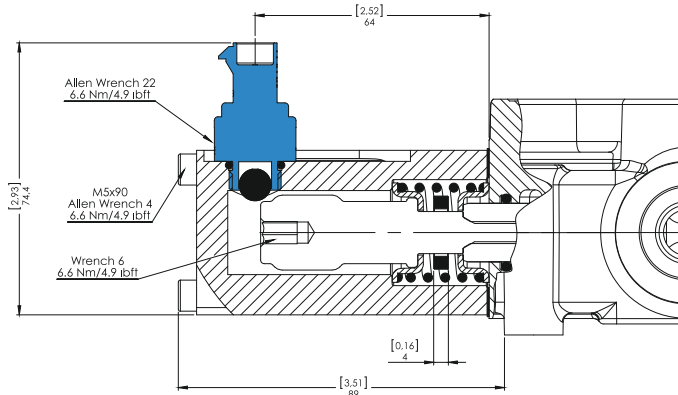
3 Pozisyon, 3.Pozisyona Mikrosviç Kontrol



# SC18B

3 Positions, Microswitch Operation in 2nd Position

3 Pozisyon, 2.Pozisyona Mikrosviç Kontrol





# Spool Options

## Sürgü Tipleri

CNC S-171 / IL- 001 (180) - B01 / B SC4 **ST11** V13 K3 / B

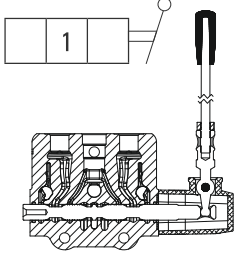
Spool Options  
Sürgü Tipleri

### Spool Positions Sürgü Pozisyonları

1st Position

1. Pozisyon

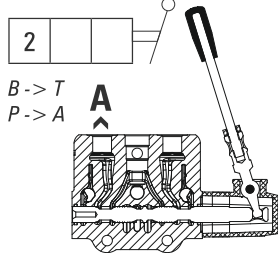
Spool Neutral Position  
Nötr



2nd Position

2. Pozisyon

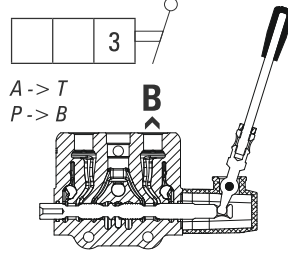
Spool In Position  
Mil İçerde



3rd Position

3. Pozisyon

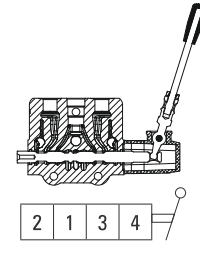
Spool Out Position  
Mil Dışarda



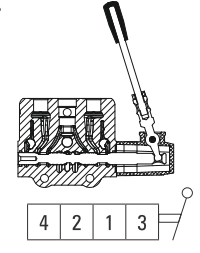
4th Position

4. Pozisyon

4th Pos. Spool Out  
4. Pozisyon Mil Dışarda



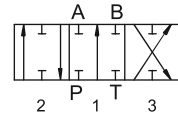
4th Pos. Spool In  
4. Pozisyon Mil İçerde



## ST1

3 Position, Double Acting

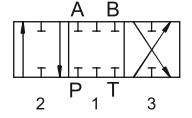
3 Pozisyon, Çift Etkili



## ST4

3 Position, Closed Center

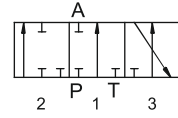
3 Pozisyon, Kapalı Merkez



## ST2

3 Position, A Port Single Acting

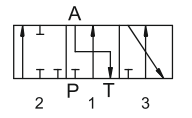
3 Pozisyon, A Port Tek Etkili



## ST5

3 Position, A Port Single Acting and to Tank

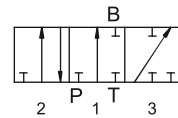
3 Pozisyon, A Port Tek Etkili ve Tanka Açık



## ST3

3 Position, B Port Single Acting

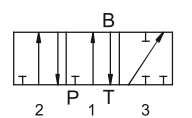
3 Pozisyon, B Port Tek Etkili



## ST6

3 Position, B Port Single Acting and to Tank

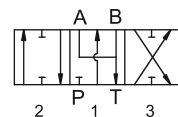
3 Pozisyon, B Port Tek Etkili ve Tanka Açık



## ST11

3 Position, Double Acting, A/B to Tank

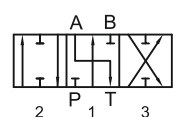
3 Pozisyon, Çift Etkili A ve B Tanka Açık



## ST7

3 Position, Double Acting A to Tank

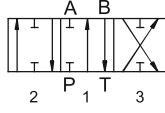
3 Pozisyon, Çift Etkili ve A Tanka Açık



## ST8

3 Position,  
Double Acting B to Tank

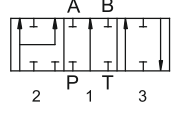
3 Pozisyon,  
Çift Etkili ve B Tanka Açık



## S12A

3 Position, Double Acting With  
Regenerative in 3rd Position  
(2nd Position Spool In)

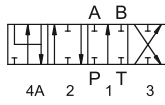
3 Pozisyon, Çift Etkili  
3. Pozisyonda Rejeneratif  
(Mil İçerde 2. Pozisyon)



## ST9A

4 Position, Double Acting with  
Float in 4th Position  
(4th Position Spool In)

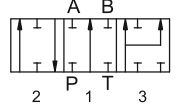
4 Pozisyon, 4. Pozisyonda Float  
(Mil İçerde 4. Pozisyon)



## ST12B

3 Position, Double Acting With  
Regenerative in 2nd Position  
(3rd Position Spool Out)

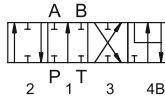
3 Pozisyon, Çift Etkili  
2. Pozisyonda Rejeneratif  
(Mil Dışarda 3. Pozisyon)



## ST9B

4 Position, Double Acting with  
Float in 4th Position  
(4th Position Spool Out)

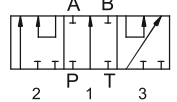
4 Pozisyon, 4. Pozisyonda Float  
(Mil Dışarda 4. Pozisyon)



## ST19

3 Position, Series Spool

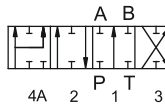
3 Pozisyon, Seri Sürgü



## ST10A

4 Position, Double Acting with  
Regenerative in 4th Position  
(4th Position Spool In)

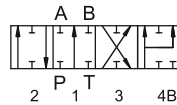
4 Pozisyon,  
4. Pozisyonda Rejeneratif  
(Mil İçerde 4. Pozisyon)



## ST10B

4 Position, Double Acting With  
Regenerative in 4th Position  
(4th Position Spool Out)

4 Pozisyon,  
4. Pozisyonda Rejeneratif  
(Mil Dışarda 4. Pozisyon)



# Auxiliary Valves

## Yardımcı Valfler

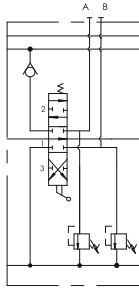
CNC S-171 / IL- 001 (180) - B01 / B SC4 ST11 **V13** K3 / B

Auxiliary Valves  
Yardımcı Valfler

### V1

Antishock valves on A & B ports

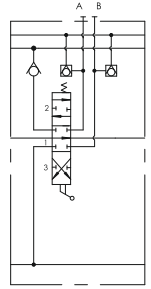
A & B portlarında antişok valfi



### V4

Anticavitation valves on A & B ports

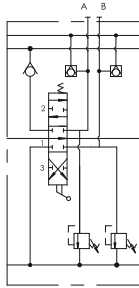
A & B portlarında antikavitasyon valfi



### V7

Antishock & anticavitation valves on A & B ports

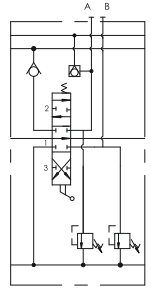
A & B portlarında antişok & antikavitasyon valfi



### V8

Antishock & anticavitation valve on port A & antishock valve on port B

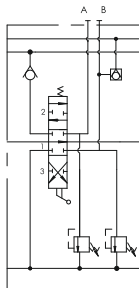
A portunda antişok & antikavitasyon valfi & B portunda antişok valfi



### V9

Antishock valve on port A & antishock & anticavitation valve on port B

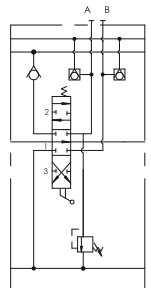
A portunda antişok valfi & B portunda antişok & antikavitasyon valfi



### V12

Antishock & anticavitation valve on port A & anticavitation valve on port B

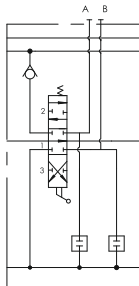
A portunda antişok & antikavitasyon valfi & B portunda antikavitasyon valfi



### V13

Port relief cavity plug on A & B ports

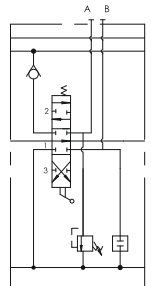
A & B portlarında kör tapa



### V17

Antishock valve on port A & port relief cavity plug on port B

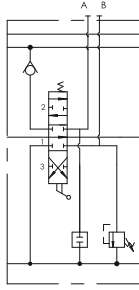
A portunda antişok & B portunda kör tapa



# V18

Port relief cavity plug on port A  
& antishock valve on port B

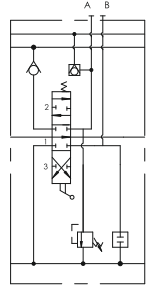
A portunda kör tapa  
& B portunda antişok valfi



# V19

Antishock & anticavitation valve  
on port A & port relief cavity plug  
on port B

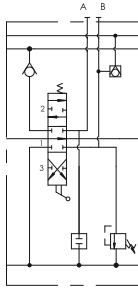
A portunda antişok  
& antikavitasyon valfi  
& B portunda kör tapa



# V20

Port relief cavity plug on port A  
& antishock & anticavitation valve  
on port B

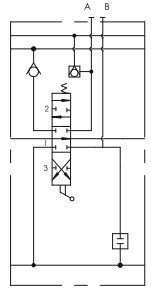
A portunda kör tapa  
& B portunda antişok  
& antikavitasyon valfi



# V21

Anticavitation valve on port A  
& port relief cavity plug on port B

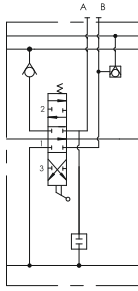
A portunda antikavitasyon valfi  
& B portunda kör tapa



# V22

Port relief cavity plug on port A  
& anticavitation valve on port B

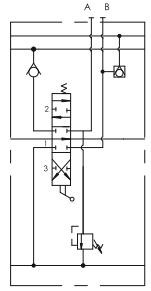
A portunda kör tapa  
& B portunda antikavitasyon valfi



# V27

Antishock valve on port A  
& anticavitation valve on port B

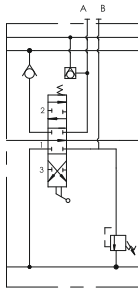
A portunda antişok  
& B portunda antikavitasyon valfi



# V28

Anticavitation valve on port A  
& antishock valve on port B

A portunda antikavitasyon valfi  
& B portunda antişok valfi



# Lever Types

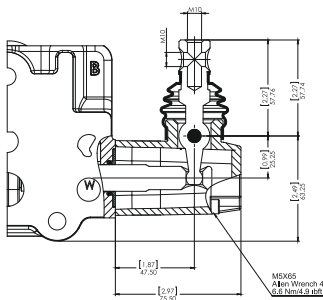
## Sap Tipleri

CNC S-171 / IL- 001 (180) - B01 / B SC4 ST11 V13 **K3** / B

Lever Types  
Sap Tipleri

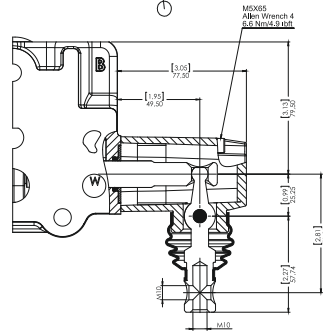
**NO**  
**CODE** Standard Lever Kit  
Standart Sap Kapađı

2 1 3



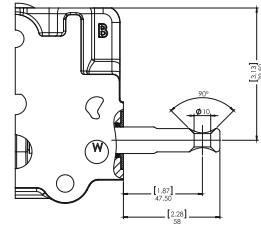
**K1** Reverse Lever Kit  
Ters montaj Sap Kapađı

2 1 3



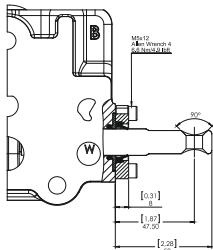
**K2** No Lever  
Sap Kapaksız

2 1 3



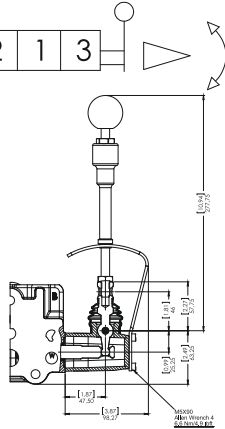
**K3** Dust Proof Plate Kit  
Toz Kapaklı

2 1 3



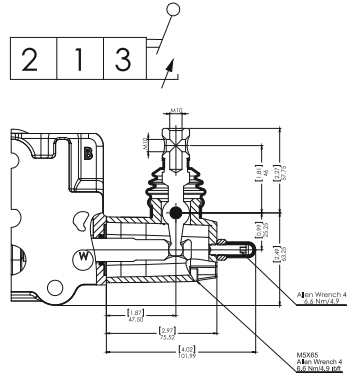
**K4** Safety Lever  
Güvenlik Kolu

2 1 3



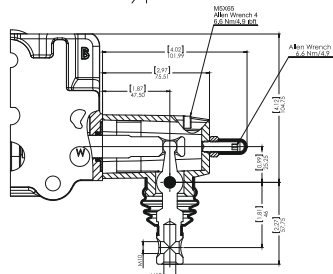
**K5** Lever Cap with Spool Limiter  
Sürgü Strok Kısıtlayıcı

2 1 3



**K6** Rev. Lever Cap with Spool Limiter  
Ters Montaj Sürgü Strok Kısıtlayıcı

2 1 3

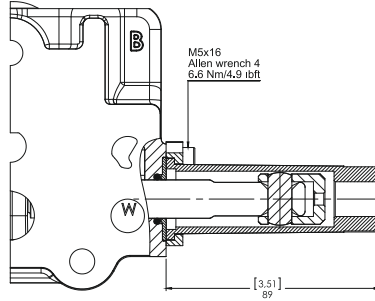


**KT**

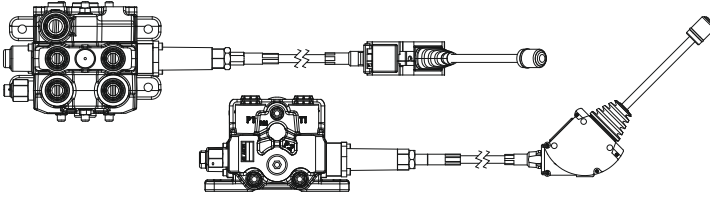
Cable Connection Kit

Kablo Bağlantı Kiti

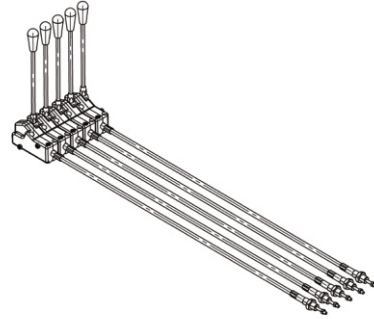
2 1 3



### Lever Cable Remote Control *Halat Kontrol*



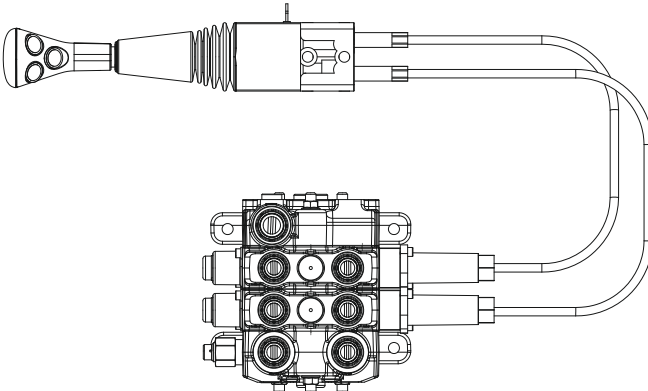
### Cable remote control for Group of Levers *Halat Kontrol Grubu*



Lever cable remote control and cable remote control for group of levers are a modular system offering unlimited number of levers together through screws, also with many different configurations and cable lengths. Assembled on the valve only on request and extra charge. Please contact our sales department for details.

*Halat kontrol ve halat kontrol grubu için farklı uzunlukları mevcuttur. Halat Kontrol grubu ise talebe göre çeşitli dilim sayıları için ve çeşitli uzunluklarda temin edilir. Kontrol grubu birbirine saplamalarla bağlanmaktadır. Lütfen detaylı bilgi için satış departmanımızla bağlantıya geçiniz.*

### Remote Joystick Control *Joystik Halat Kontrol*



Remote joystick control is available with several options. Please indicate the cable length demanded and contact our sales department for further demands.

*Joystik halat kontrol farklı çeşit ve uzunluklarda mevcuttur. Lütfen satış departmanımızla bağlantıya geçiniz.*

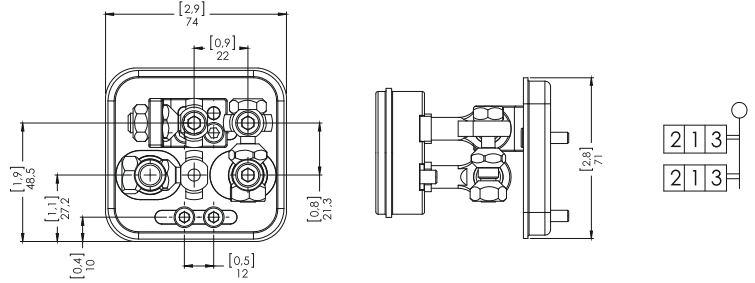
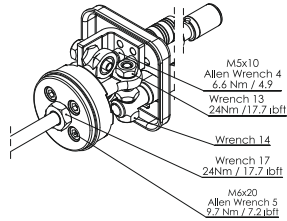
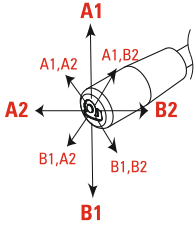
# Joystick Control

## Joystik Kontrol

### K7

Manual Joystick with pivot on top left

Manuel Joystick Kontrol (Pivot Sol Üst)

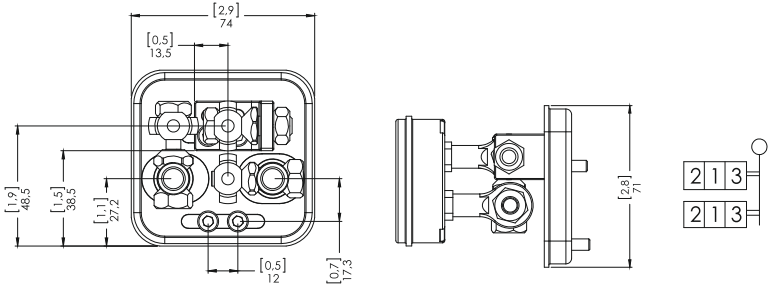
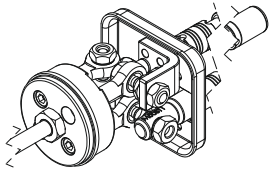
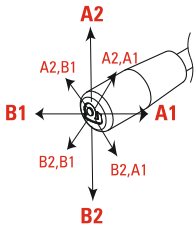


K7 is standard configuration unless otherwise specified.  
Aksi belirtilmedikçe K7 standart konfigürasyondur.

### K7B

Manual Joystick with pivot on top right

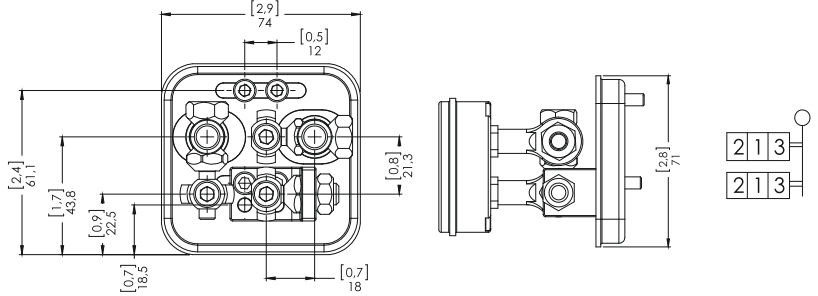
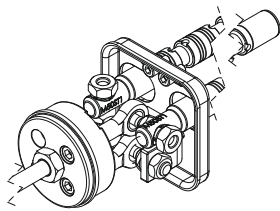
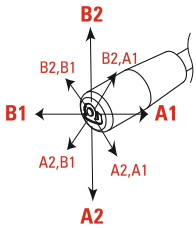
Manuel Joystick Kontrol (Pivot Sağ Üst)



### K7C

Manual Joystick with pivot on bottom right

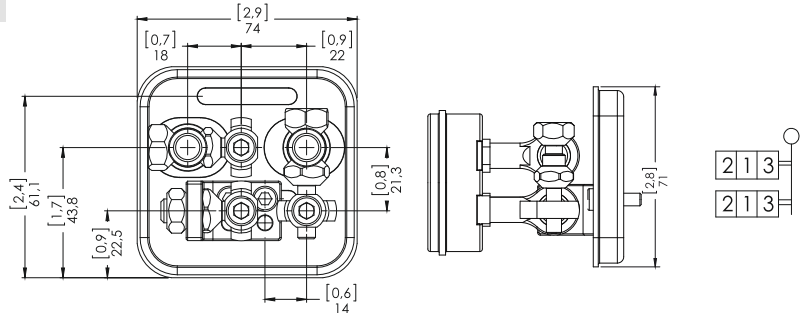
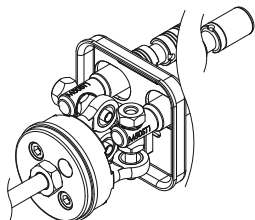
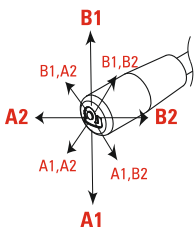
Manuel Joystick Kontrol (Pivot Sağ Alt)



### K7D

Manual Joystick with pivot on bottom left

Manuel Joystick Kontrol (Pivot Sol Alt)



# Outlet Options

## Tank (T) Hattı Opsiyonları

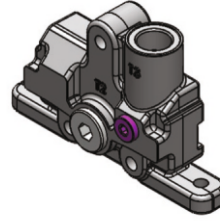
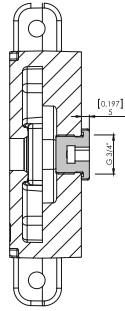
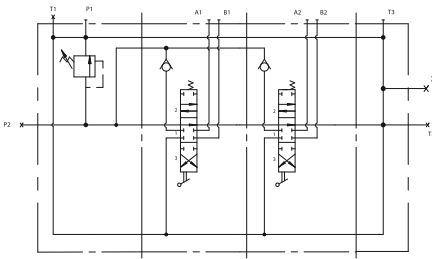
CNC S-171 / IL- 001 (180) - B01 / B SC4 ST11 V13 K3 / **B - H**

Outlet Options  
Tank (T) Hattı Opsiyonları

### Standard Open Center Upper Outlet (T3 open, T1,T2 plugged)

#### Standart Açık Merkez (T3 açık, T1 ve T2 kör)

Port Thread Port Ölçüsü	Code / Kod
G 1/2"	<b>B</b>
G 3/4"	<b>C</b>



Please contact our Sales Department for other outlet options.  
Özel talepleriniz için lütfen Satış Departmanımızla bağlantıya geçin.

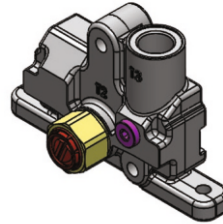
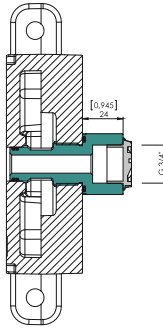
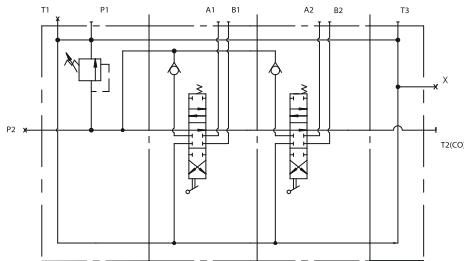
### Outlet with Carry-Over

#### Carry-Over

When Carry-Over is used for series connection with another valve, T3 or T1 of the first valve must be connected to the tank.

Carry-over kullanıldığında, 1. valfin tank hattı (T3 veya T1) mutlaka tanka bağlanmalıdır.

Port Thread Port Ölçüsü	Code / Kod
G 1/2"	<b>B-H</b>
G 3/4"	<b>C-H</b>



### Outlet with Closed Center Plug

#### Kapalı Merkez

Port Thread Port Ölçüsü	Code / Kod
G 1/2"	<b>B-K</b>
G 3/4"	<b>C-K</b>

