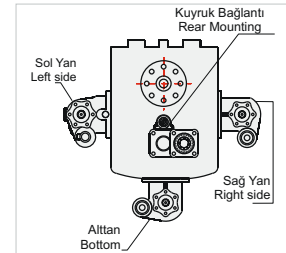
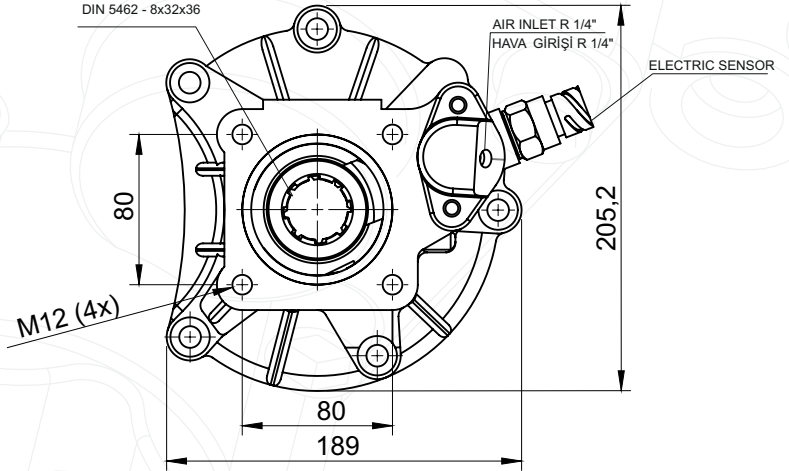
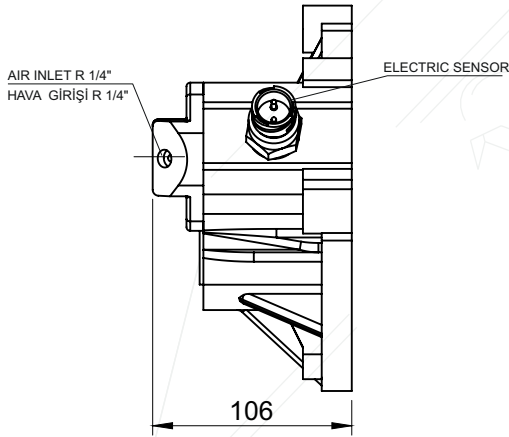
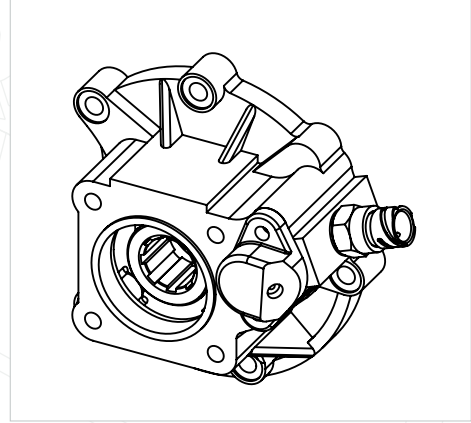
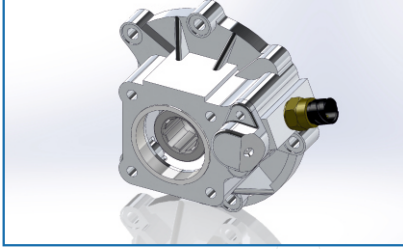


50132322P1



GENEL BİLGİLER/GENERAL DATA

P.T.O. KODU / P.T.O. CODE	50132322P1	
Tork / Torque	333,5 Nm	34Kgm
Güç(1000 rpm) / Power	32,4 kW	
Devir / Speed	1000 rpm	1000 rpm
Oran / Ratio	1/1	1/1
Ağırlık / Weight		
Bağlantı / Mounting	Kuyruk	Rear
Kumanda / Control	Havalı	Pneumatic
Dönüş / P.T.O. Rotation	Sağ - ISO	Right - ISO

Ana Şanzıman / Gearbox	Kullanılan Bazı Araçlar / Used Vehicles
G 60,85 (560 rpm, SAĞ)	614-814-815-817-818-823-925-1017-1215-1217-1223-1225-1317-1323-1328-1517-1523-1618-1623-1823 ATEGO

Seçeceğiniz pompanın dönüş yönü, P.T.O. dönüş yönü ile ters olmalıdır.
The rotation of the chosen pump has to be opposite with the rotation of P.T.O.

P.T.O. montaj edildikten sonra ana şanzıman yağını tamamlayın.
Fill the oil of the gear box after mounting the P.T.O.

POWER TAKE OFF

P.T.O.