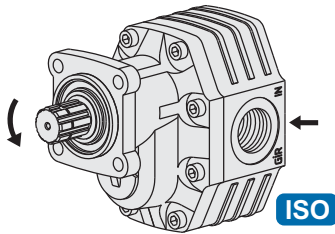


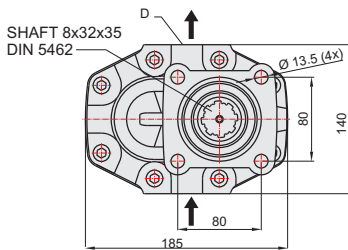
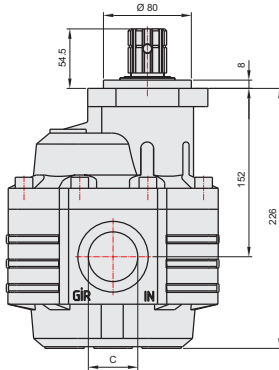
133 LİTRE DİŞLİ POMPA

133 cc GEAR PUMP

34013331/32

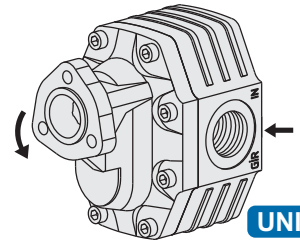


ISO

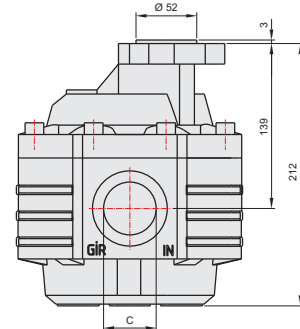


SHAFT 8x32x35
DIN 5462

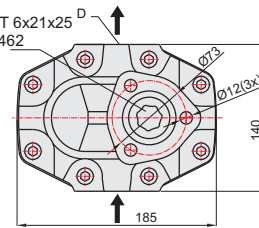
34013311/12



UNI

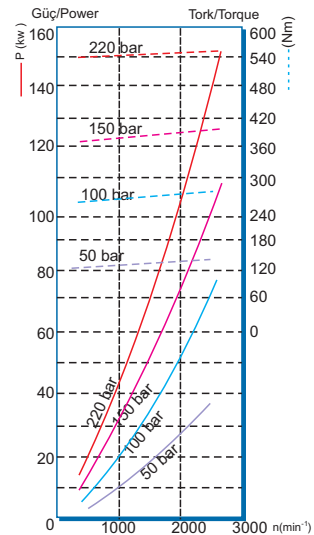


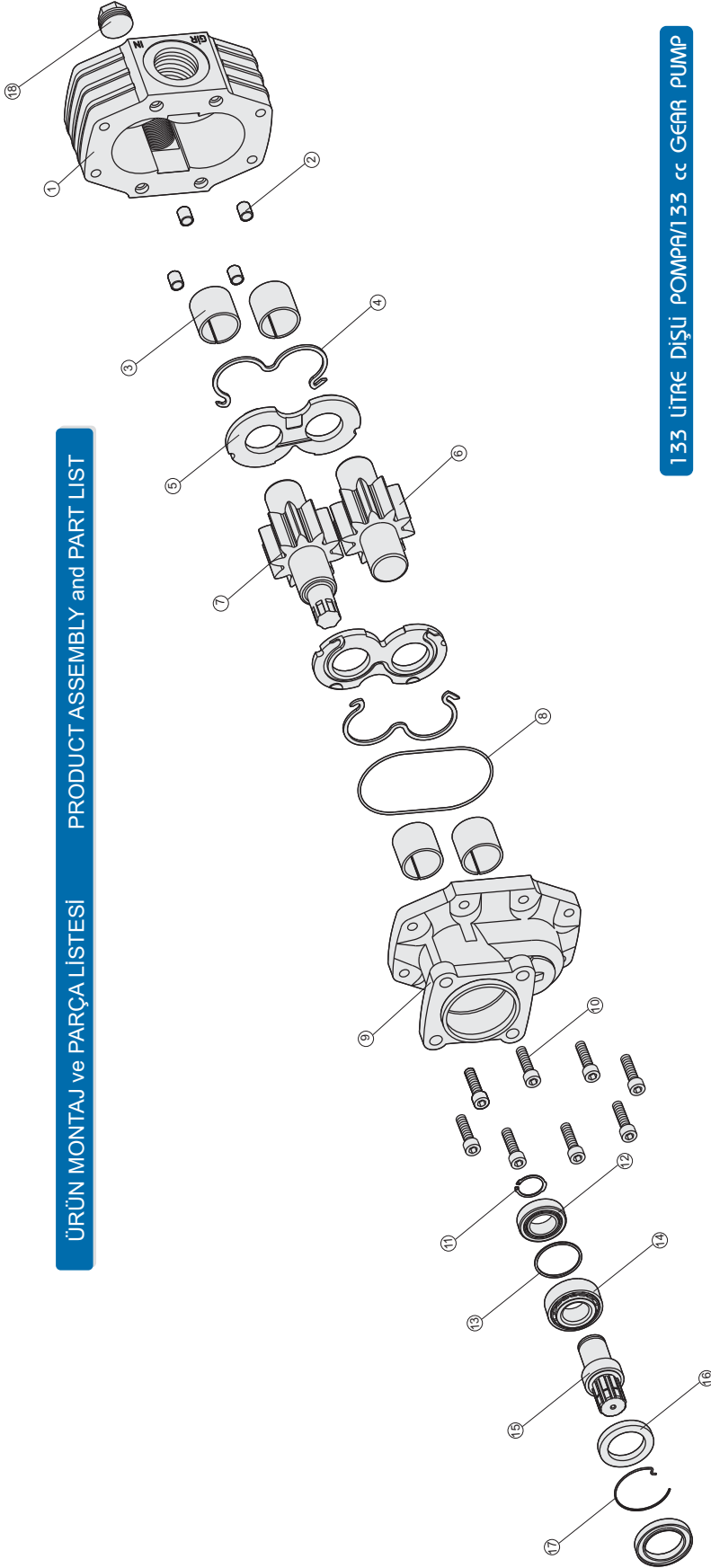
SHAFT 6x21x25
DIN 5462



GENEL BİLGİLER/GENERAL DATA

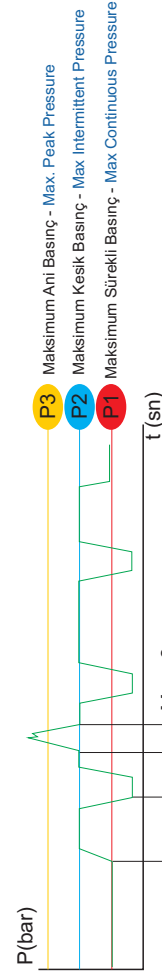
Pompa Kodu Pump Codes	ISO 34013331/32	UNI 34013311/12
Pompa Tipi / Pump Type	40-133	40-133
Min. Boru Çapı / Min. Hose Dia.	38	38
Ağırlık / Weight(kg)	19,8	19,5
(C) Yağ Giriş / Oil Inlet	R 1 1/2"	R 1 1/2"
(D) Yağ Çıkış / Oil Outlet	R 1"	R 1"
Akışkan Fluid	Mineral Bazlı Hidrolik Yağ Mineral based hydraulic oil	





133 LİTRE DİŞLİ POMPA/133 cc GEAR PUMP

Adet	Parça No	Parça Adı	Kod
1	1	Gövde	34013331-01
4	2	Merkez Burcu	34013331-02
4	3	38x38 Burç	34013331-03
2	4	M O-ring	34013331-04
2	5	Alüminyum Plate	34013331-05
1	6	Kısa Dişli	34013331-06
1	7	Uzun Dişli	34013331-07
1	8	2.62x118 O-ring	34013331-08
1	9	Dpa Kapak	33013331-09
1	19	Dpa Kapak	34013311-19
8	10	M12x45 Cıvata	34013331-10
1	11	471-35 Segman	34013331-11
1	12	32007 Rulman	34013331-12
1	13	56x62x2 Pul	34013331-13
1	14	32207 Rulman	34013331-14
1	15	Dpa Mili	34013331-15
2	16	50x72x7 Kece	34013331-16
1	17	Tel Segman	34013331-17
1	18	1" Tapa	34013331-18
35	TOPLAM PARÇA SAYISI		



İdeal yağ sıcaklığı Ideal oil temp.	50° /60°C	Maksimum sıcaklık Maximum temp.	0° /80°C
--	-----------	------------------------------------	----------

GENEL BİLGİLER/GENERAL DATA

Pompa Tipi Pump Type	Debi Displacement	Min. Sürekli Hız Max. Continuous Speed	Min. Kesik Hız Max. Intermitt. Speed	Max. Sürekli Basınç Max. Continuous Pressure	Max. Kesik Basınç Max. Intermitt. Pressure	Max. Ani Basınç Max. Peak Pressure	Ağırlık Weight
40-133	132,38/29,10	1500	250	210/3046	210/3046	315/4569	19,80/53,00
	lt/dk(gpm)	n(min ⁻¹)	n(min ⁻¹)	bar (psi)	bar (psi)	bar (psi)	kg(lb) Pound