

43 LİTRE DİŞLİ POMPA 43 cc GEAR PUMP

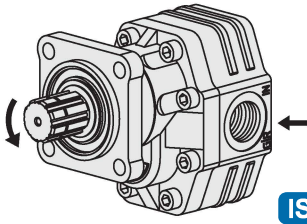
33004331/32



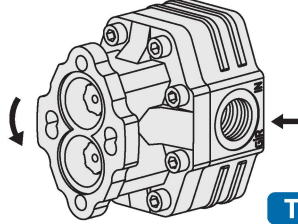
33004323



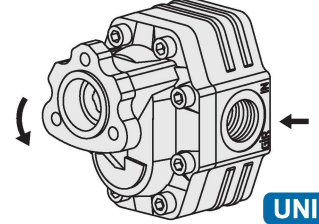
33004311/12



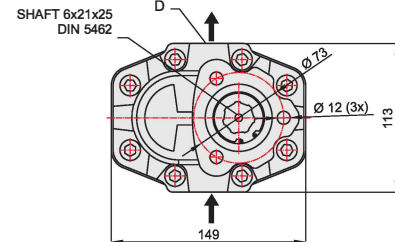
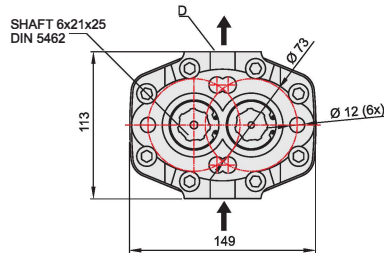
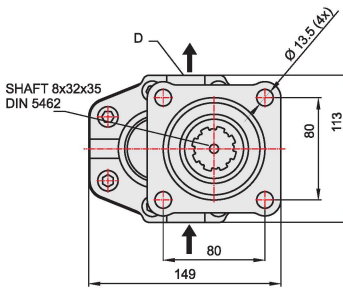
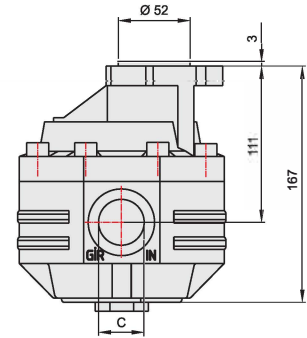
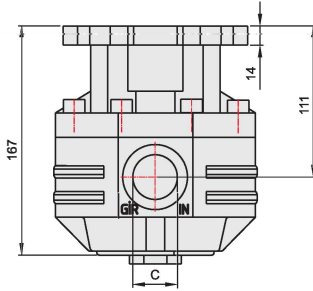
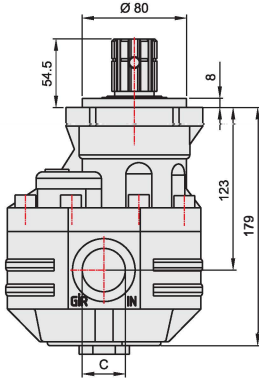
ISO



T2

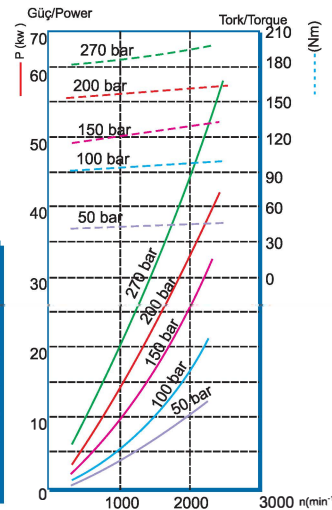


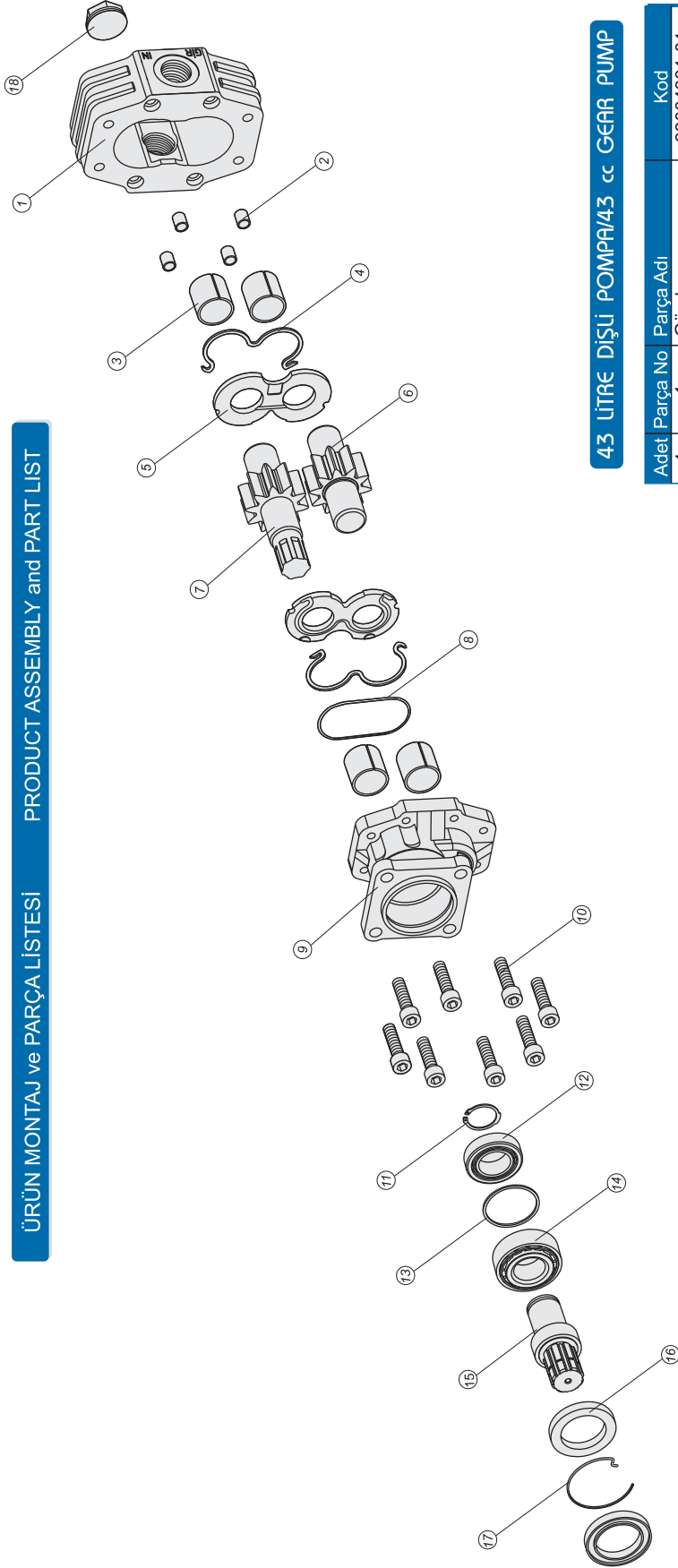
UNI



GENEL BİLGİLER/GENERAL DATA

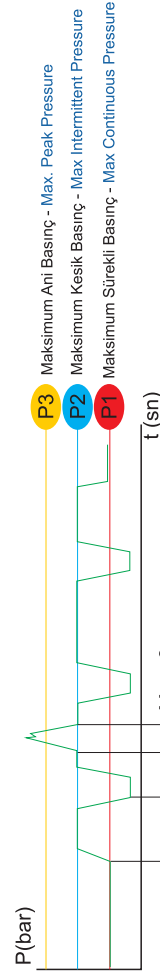
Pompa Kodu Pump Codes	ISO 33004331/32	T2 33004323	UNI 33004311/12
Pompa Tipi / Pump Type	30-43	30-43	30-43
Min. Boru Çapı / Min. Hose Dia.	26	26	26
Ağırlık / Weight(kg)	12	10,5	10
(C) Yağ Giriş / Oil Inlet	R 1"	R 1"	R 1"
(D) Yağ Çıkış / Oil Outlet	R 3/4"	R 3/4"	R 3/4"
Akışkan Fluid	Mineral Bazlı Hidrolik Yağ Mineral based hydraulic oil		





43 LİTRE DİŞLİ POMPA/43 cc GEAR PUMP

Adet	Parça No	Parça Adı	Kod
1	1	Gövde	33004331-01
4	2	Merkez burcu	33004331-02
4	3	28x32x30 Burç	33004331-03
2	4	M O-ring	33004331-04
2	5	Alüminyum Plate	33004331-05
1	6	Kısa Dişli	33004331-06
1	7	Uzun Dişli	33004331-07
1	8	1.78x98.05 O-ring	33004331-08
1	9	Dpa Kapak	33004331-09
1	19	T1 Kapak	33004311-19
1	20	T2 Kapak	33004323-20
8	10	M10x40 Civata	33004331-10
1	11	471-35 Segman	33004331-11
1	12	32007 Rulman	33004331-12
1	13	56x62x2 Pul	33004331-13
1	14	32207 Rulman	33004331-14
1	15	Dpa Mili	33004331-15
2	16	50x72x7 Keçe	33004331-16
1	17	Tel Segman	33004331-17
1	18	3/4" Tapa	33004331-18
36	TOPLAM PARÇA SAYISI		



İdeal yağ sıcaklığı Ideal oil temp.	50° /60°C	Maksimum sıcaklık Maximum temp.	0° /80°C
--	-----------	------------------------------------	----------

GENEL BİLGİLER/GENERAL DATA

Pompa Tipi Pump Type	Debi Displacement	Max. Sürekli Hız Max. Continuous Speed	Min. Kesik Hız Min. Intermitt. Speed	Max. Kesik Hız Max. Intermitt. Speed	Max. Sürekli Basınç Max. Continuous Pressure	Max. Kesik Basınç Max. Intermitt. Pressure	Max. Ani Basınç Max. Peak Pressure	Ağırlık Weight
30-43	lt/dk(gpm)	n(min ⁻¹)	n(min ⁻¹)	n(min ⁻¹)	bar (psi)	bar (psi)	bar (psi)	kg(lb) Pound
	43,70/09,60	2200	350	3500	280/4061	305/4424	400/5801	12,00/32,20