

34 LİTRE DİŞLİ POMPA / 34 cc GEAR PUMP

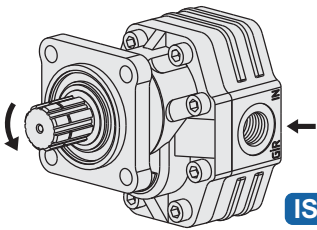
33003431/32



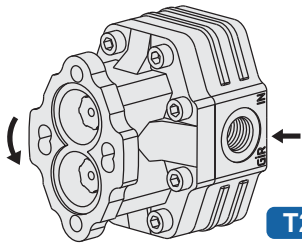
33003423



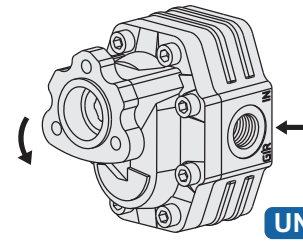
33003411/12



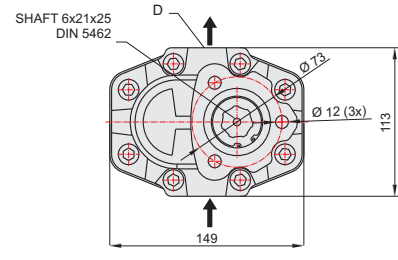
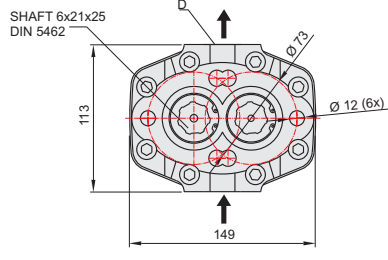
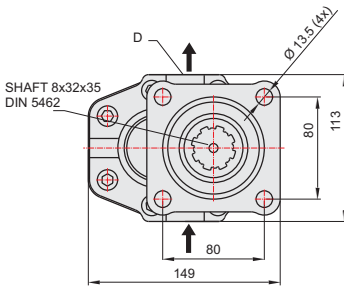
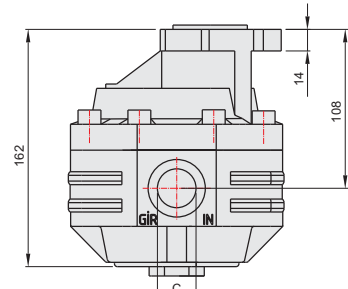
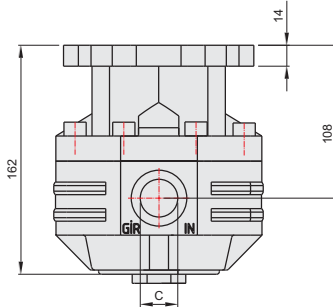
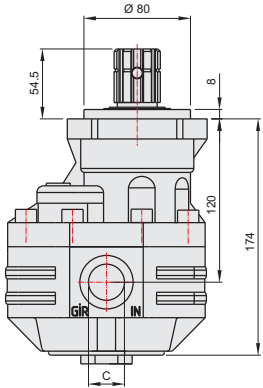
ISO



T2

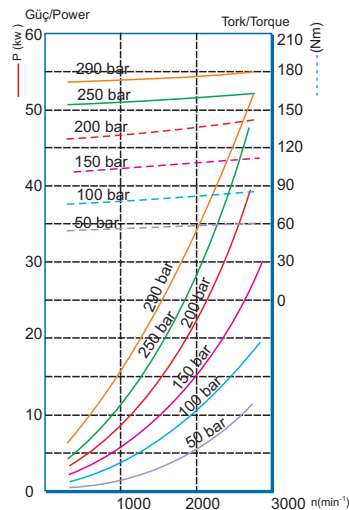


UNI

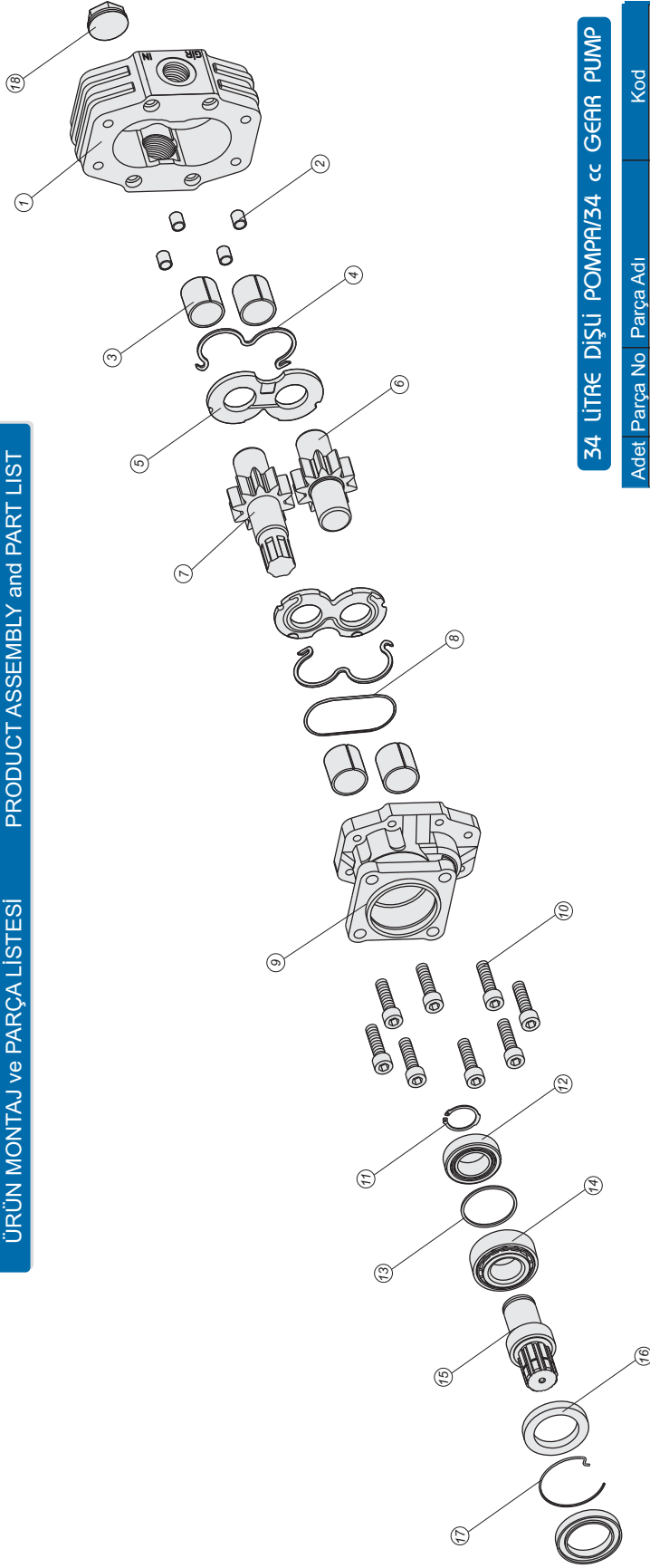


GENEL BİLGİLER/GENERAL DATA

Pompa Kodu Pump Codes	ISO 33003431/32	T2 33003423	UNI 33003411/12
Pompa Tipi / Pump Type	30-34	30-34	30-34
Min. Boru Çapı / Min. Hose Dia.	20	20	20
Ağırlık / Weight(kg)	11,5	10	9,5
(C) Yağ Giriş / Oil Inlet	R 3/4"	R 3/4"	R 3/4"
(D) Yağ Çıkış / Oil Outlet	R 3/4"	R 3/4"	R 3/4"
Akışkan Fluid	Mineral Bazlı Hidrolik Yağ Mineral based hydraulic oil		

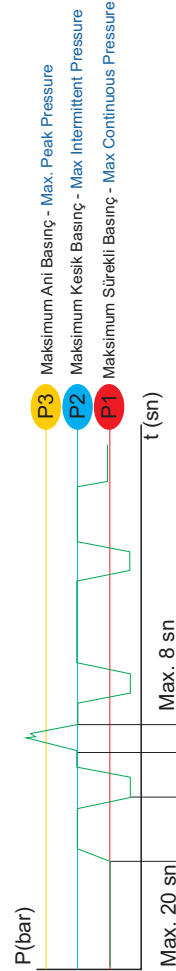


ÜRÜN MONTAJ ve PARÇA LİSTESİ PRODUCT ASSEMBLY and PART LIST



34 LİTRE DİŞLİ POMPA/34 cc GEAR PUMP

Adet	Parça No	Parça Adı	Kod
1	1	Gövde	33003431-01
4	2	Merkez burcu	33003431-02
4	3	28x32x30 Burç	33003431-03
2	4	M O-ring	33003431-04
2	5	Alüminyum Plate	33003431-05
1	6	Kısa Dişli	33003431-06
1	7	Uzun Dişli	33003431-07
1	8	1.78x98.05 O-ring	33003431-08
1	9	Dpa Kapak	33003431-09
1	19	T1 Kapak	33003411-19
1	20	T2 Kapak	33003423-20
8	10	M10x40 Cıvata	33003431-10
1	11	471-35 Segman	33003431-11
1	12	32007 Rulman	33003431-12
1	13	56x62x2 Pul	33003431-13
1	14	32207 Rulman	33003431-14
1	15	Dpa Mili	33003431-15
2	16	50x72x7 Kece	33003431-16
1	17	Tel Segman	33003431-17
1	18	3/4" Tapa	33003431-18
36		TOPLAM PARÇA SAYISI	



İdeal yağ sıcaklığı Ideal oil temp.	50° /60°C	Maksimum sıcaklık Maximum temp.	0° /80°C
--	-----------	------------------------------------	----------

GENEL BİLGİLER/GENERAL DATA

Pompa Tipi Pump Type	Debi Displacement	Max. Sürekli Hız Max. Continuous Speed	Min. Kesik Hız Min. Intermitt. Speed	Max. Kesik Hız Max. Intermitt. Speed	Max. Sürekli Basınç Max. Continuous Pressure	Max. Kesik Basınç Max. Intermitt. Pressure	Max. Ani Basınç Max. Peak Pressure	Ağırlık Weight
30-34	34,30/07,50 lt/dk(gpm)	2200 n(min ⁻¹)	350 n(min ⁻¹)	3500 n(min ⁻¹)	300/4351 bar (psi)	325/4714 bar (psi)	450/6526 bar (psi)	11,5/60,50 kg(lb) Pound